

User's Manual

Monochrome Multifunction Laser Printer

M18 series

deli 得力



- Thanks for choosing Deli products.
- Sincere thanks to you for using Deli products!
- Please refer to the actual product for its appearance
- Please carefully read the following statement to protect your immediate rights and interests.
- For more help, please log in: www.deliprinter.com

Introduction to the functions of each model of the product

Functions Model	Print	Scan	Copy	Wired network	Wireless network	USB connection	Mobile print	Manual double-sided printing
M1820W	●	●	●	—	●	●	●	●

- “●” indicates supported, and “—” indicates not supported.
- The product series is subject to addition or change without further notice.
- The product pictures in this manual are all based on the M1820W. Different models may have different appearances.

Provision of spare parts (components) and consumables

After the production of the printer stops, some spare parts (components) and consumables (toner cartridge) will be provided for 5 consecutive years.

Suggestions for product placement

It is recommended to place this product in a relatively ventilated and independent area.

Suggestions for using recycled paper

To save resources and promote green environmental protection, users can also use high-quality recycled paper.

Suggestions for zero energy consumption

This product can only achieve zero energy consumption after the power plug is disconnected.

Contents

Important guidance.....	1
Precautions and safety.....	1
About this manual.....	1
General safety information.....	1
Installation location.....	2
Electrical safety.....	2
Warranty.....	3
Toner cartridge.....	3
Maintenance.....	3
Laser safety.....	3
Ozonide.....	3
Radio interference.....	3
WARNING.....	4
Device introduction.....	5
Printer component.....	5
Control panel.....	5
Keys functions.....	6
LED indicator light.....	6
LED lighting mode.....	6
LED lighting meaning.....	6
Initial Unpacking.....	7
1. Unpack the printer.....	7
2. Install toner cartridge.....	7
3. Put in paper.....	8
4. Turn on the power.....	9
5. Go to the main screen.....	9
Connecting device.....	10
Mobile phone connection and use.....	10
Computer connection and use.....	11
Recommended operating systems.....	11
Download [Deli Print Assistant].....	11
To add a USB printer.....	11
To add a network printer.....	13
Network search mode.....	18
Set the network segments for searching.....	19
Set a specific IP.....	20
Specifications of print medium.....	22
Print settings.....	23
Printing preferences.....	23
Paper/Quality.....	24
Extended function.....	24
Copy.....	27
General copying.....	27
ID card copying.....	28
Copy settings.....	28
Scan.....	29
Scan with [Deli Print Assistant].....	29
[Deli Print Assistant] - scan settings.....	31
Scan with [Deli Print] APP.....	32
Push scanning with printer.....	32
Push scanning-scanning settings.....	33

Use of Web Services.....	34
Web service introduction.....	34
Access Web interface.....	34
Web service function	35
Routine maintenance	37
Replace toner cartridge	37
Clean the scanner	38
Troubleshooting	39
Printer error.....	39
Paper jam	40
Paper refeeding.....	41
Image problems.....	41
[Deli Print Assistant] - installation failed	43
Printing problem	43
Appendix	44

Important guidance

Precautions and safety

Before operating this device, please carefully read the following instructions and refer to them as needed to ensure the continuous and safe operation of the device.

The design and testing of Deli printers and printing consumables strictly meet safety requirements, including evaluation and certification by safety agencies, and comply with electromagnetic regulations and established environmental standards. The safety and environmental testing as well as performance of this device have only been verified using materials printed by Deli.

⚠ Warning: Unauthorized modifications, including adding new features or connecting external devices, may affect the normal use of the product. For more information, please contact the Deli Service Center.




Special declaration:

- This manual describes the M1820W model and the functionality of the product you purchased may vary.
- Product information is subject to change without prior notice.
- For more product information, please visit the official website of Deli: www.deliprinter.com
- Please make sure to read the "Product Safety Manual" thoroughly before reading the "User Manual".
- Deli is not liable for any consequence resulted from non-compliance with the instructions in the "Product Safety Manual" as well as the losses arising from illegal operations.

About this manual

Please read this user manual carefully. Please follow all safety instructions to ensure the normal operation of the device. The manufacturer shall not be liable for the consequences of non-compliance with these instructions.

■ Signs used in this user manual

Signs	Description
	This sign is used to remind users that improper use of this product may pose a fatal threat or serious injury.
	This sign indicates high temperature. When this sign is present, be wary of the danger of hot surfaces.
	This sign indicates that touch is prohibited, and when this sign appears, touch is strictly prohibited.
▲ Caution	This sign indicates that the user should be more cautious in the operation. Improper operations may cause device damage or data missing.
▲ Note	This sign represents an explanation and helps users use this device more effectively and conveniently.

General safety information

Deli reserves the right to make changes to the product from time to time.

The plastic packaging bags of this device and its accessories are not toys. Keep such things out of the reach of children to prevent suffocation hazards.

If users with a pacemaker notice any abnormalities in the pacemaker when approaching this device, immediately stay away from the device and seek medical attention.

If it is not possible to operate this device properly as instructed, please follow the relevant contents in the Instructions. Improper operation may cause device damage or expand the scope of damage.

Nothing in this manual shall affect the warranty terms of the device, nor shall any additional warranty terms be added.

Failure to follow the safety instructions in this manual may invalidate the product warranty terms.

If this device is used in a country or region other than that where the product was purchased, it may result in its inability to function properly.

Do not remove or damage any warning labels on the surface or inside the device.

Installation location

Please place this device on a stable horizontal table or cabinet. Do not place this device in a movable table, cabinet, or cart, as falling off the device may cause damage to the device or personal injury; especially for places with children's activities, ensure that the device is placed in a safe location.

Do not place this device in a location with high traffic, especially narrow passages or similar locations, to avoid accidental collision or falling of the device, which may cause device damage or personal injury.

If the device falls, immediately cut off the power supply and unplug the product power cable plug, and hand it over to an authorized repair station of Deli for inspection and repair by the professional maintenance personnel.

Please properly arrange the power cord and other cables connected to this device to ensure that they do not trip anyone, otherwise it may cause personal injury or device falling damage.

Please place this device indoors with an ambient temperature of 10 °C~32 °C, a humidity of 20% -80%, and no condensation

The normal working environment temperature of this device is 10 °C-32 °C, and the humidity is 30% -70%.

Do not place the device in any of the following environment, as it may cause the device to malfunction or damage, or even cause a fire.

- Direct sunlight, excessive temperature, proximity to open flames or heat sources, sudden temperature changes.
- Near the water source (including condensation water that may be generated by air conditioning, refrigerators and fans), humid environment;
- Dust, corrosive gases, or environments near chemicals.

Please place the device in a well-ventilated indoor environment and ensure that there is enough space around the device (as shown in the figure on the right).

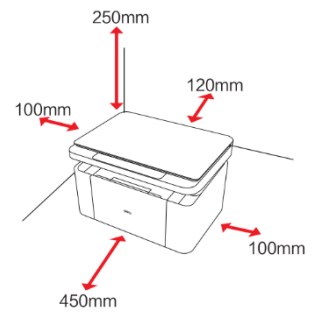
Please ensure that sufficient space is reserved to open the scanning bin and feed tray.

Do not block or cover any part of the device, especially the ventilation openings, as it may hinder ventilation, cause damage to the device, or even cause a fire.

Do not place the device in a closed cabinet, as it may overheat or even catch fire.

Do not place this device on soft surfaces such as tablecloths or carpets, as this may cause the device to overheat or catch fire.

Do not stack or place any items on this device, and do not insert any items into the gaps of the device casing.



Electrical safety

Please ensure that this device is connected to a grounded AC power source within the rated voltage range as indicated on the label. If unsure, contact a professional electrician. The use of mismatched AC power sources may cause device damage, fire, or personal injury.

Please use the power connection cable provided with the machine to connect to the wall power outlet and the power interface of this device.

Do not use third-party power cables, as this may cause fire or personal injury.

Please ensure that the power socket on the wall is installed by a professional electrician and well grounded. Do not modify the power cord plug arbitrarily, otherwise it may cause device damage or fire.

The extension cord socket (if any) used shall meet the requirements of the latest national standards.

Before removing the power plug from the AC power socket, turn off the device by using the power switch on the device panel.

Never connect this device to the power socket controlled by automatic timer, or share the same circuit with high-power appliances such as air conditioner, copier, microwave oven, induction cooking, or it may lead to circuit overload, or even fire.

For plugging and unplugging the power cord, the plug instead of the power cord should be firmly held.

Do not plug or unplug the power cord with wet hands, otherwise it may cause electric shock.

Do not overstretch the power cord, do not step on it, and do not use a damaged power cord, otherwise it may cause a fire.

Do not use this device in thunderstorm weather.

If any of the following situations occur, please immediately turn off the device and disconnect the AC power supply, and call the Deli service hotline.

- This device emits odor or abnormal noise
- Worn AC power plug or connection wire
- Tripping of circuit breakers or fuses on the circuit.
- Any component of this device is damaged.
- This device has been invaded by water.

In any of the following cases, immediately unplug the power cable plug and contact Deli maintenance station to have the device handled by Deli professional maintenance personnel.

- This device has liquid leakage.
- This device has been exposed to rain or water ingress.
- This device has abnormal heat, smoke, abnormal noise, and pungent odor.

Warranty

This device does not have any component that users can repair. Do not attempt to disassemble or repair the device on your own, as this may result in hazards such as electric shock. Device damage caused by self-disassembly or self-repair of the device is not covered by the warranty.

Please use Deli genuine toner cartridge. The use of non-Deli genuine toner cartridges may cause equipment damage that is not covered by the warranty.

If this device malfunctions, please call the Deli service hotline; if necessary, please entrust this device to the authorized repair station for professional maintenance personnel to repair.

Toner cartridge

Please place the toner cartridge in a flat and stable place when replacing the toner cartridge, in order to prevent it from falling, otherwise, it may cause toner leakage.

Do not open or disassemble the toner cartridge as the toner cartridge has no components that users can maintain on their own!

Opening or disassembling the toner cartridge without permission may cause toner leakage!

Please clean the leaked toner by using a soft dry cloth or tissue.

Do not use hot water to remove the leaked toner, as this may cause toner to condense.

Do not use a vacuum cleaner to remove the leaked toner, as this may result in toner splashing or internal fire inside the vacuum cleaner!

If you inhale or ingest toner, seek medical attention immediately! If your skin comes into contact with toner, immediately remove clothing contaminated with toner and rinse the skin with plenty of water. If the toner enters the eyes, immediately wash with plenty of water for at least 15 minutes and seek medical attention immediately!

Do not place the toner cartridge in a place that is accessible to children, whether it is new or used.

It is recommended to put the used toner cartridge into a plastic bag and dispose of it properly in accordance with relevant laws and regulations.

Do not throw the toner cartridge into a fire as it may cause an explosion!

Maintenance

Please be sure to unplug the power cord before cleaning and maintaining the product.

Please clean the exterior or interior of the device with soft dry cloth or tissue.

Do not use any liquid, spray or detergent of any type to clean the exterior or interior of the device, otherwise fire or electric shock may be caused.

Some parts inside the device may experience extremely high temperatures during or after use. Please wait for at least 10 minutes until the device has completely cooled down before touching the parts inside it.

Laser safety

This device is a laser device of Class 1 that complies with the laser radiation standard IEC 60825-1:2014. The label shown in the following figure is on the product nameplate.



Semiconductor laser specifications

- Laser wavelength: 770-800nm
- Maximum power: 12mW

This device uses laser. Due to the potential damage to eyes, only the qualified maintenance personnel can remove the cover or repair this device.

Note: Implementing controls, adjustments or procedures beyond the scope of this document may result in hazardous radiation exposure.

Ozonide

This product will not produce significant ozone gas (O₃), which relies on the print volume, and is heavier than air. Printers should be installed in well ventilated rooms.

Radio interference

The device complies with the standard GB/T9254.1-2021 Class B.

The main technical parameters and indicators of the device are as follows:

Operation frequency: 2.4-2.4835GHz.

Transmission power: ≤ 20dBm (EIRP)

Occupied bandwidth: ≤40MHz ≤3MHz.











Frequency tolerance: ≤20ppm

Stray emission limit: ≤ -30dBm

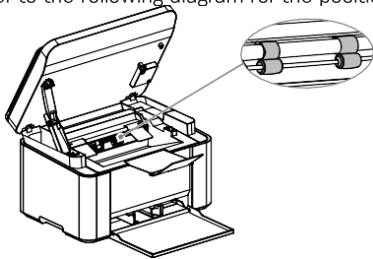
Modulation method: BPSK/QPSK/16QAM/64QAM/DBPSK/DQPSK/CCK GFSK $\pi/4$ -DQPSK 8DPSK

Note: In order to operate this device near industrial, scientific and medical (ISM) equipment, it may be necessary to limit the external radiation of the ISM equipment or take special mitigation measures.
Never change the transmission frequency or increase the transmission power (including additional installation of RF power amplifiers) without authorization, and never connect antennas or switch to other transmission antennas without authorization.
Do not cause harmful interference to various legitimate radio communication services during use. Once interference is found, measures should be taken to eliminate the interference before use.
The use of power radio equipment must withstand interference from various radio services or radiation interference from industrial, scientific, and medical application equipment.
Do not use near airplanes and airports.

WARNING

-  This symbol indicates that the product should not be discarded together with other wastes. A more appropriate approach is to send waste device to designated collection points for recycling and reuse of electrical and electronic parts.
-  This product is suitable for indoor use, not for outdoor use.
-  It is only suitable for safe use in non-tropical climate conditions.
-  Only suitable for safe use in areas with an altitude of 2000 m and below.
-  Danger: This sign indicates a warning of danger to humans, as improper operation may result in personal injury or damage.
-  Never touch: This sign provides a warning of danger to humans. The improper operation may result in personal injury or damage.
-  This product fully meets the requirements of the Chinese electronic industry standard SJ/T11364-2014.
-  If the steam white smoke appears near the exit tray of the machine during the printing process, it may be caused by the use of damp paper, which is not a machine malfunction and can continue to be used; If you are concerned about the phenomenon of steam white smoke, use the new paper that has not been unpacked.
-  Hot parts! Wait for half an hour after turning off the power before touching the component.
-  Moving parts! Keep away from moving parts. *

* Refer to the following diagram for the position of moving parts



Name and content of harmful substances in products

Part name	Harmful Substances					
	Pb	Hg	Cd	Hexavalent chromium (Cr (VI))	Polybrominated Biphenyls (PBB)	Polybrominated Diphenyl Ether (PBDE)
Printer core	×	○	○	○	○	○
Scanning assembly	○	○	○	○	○	○
Plastic case	○	○	○	○	○	○
Circuit board	○	○	○	○	○	○
Toner cartridge	○	○	○	○	○	○
Power cord assembly	○	○	○	○	○	○

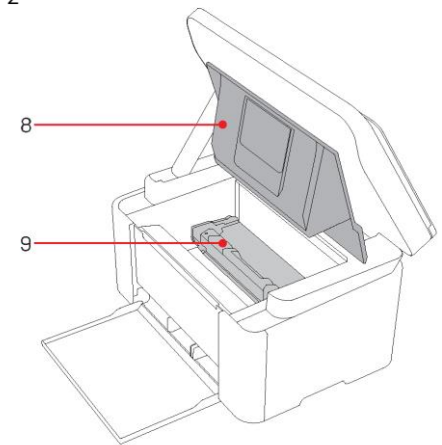
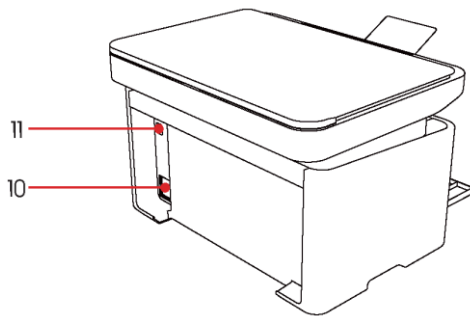
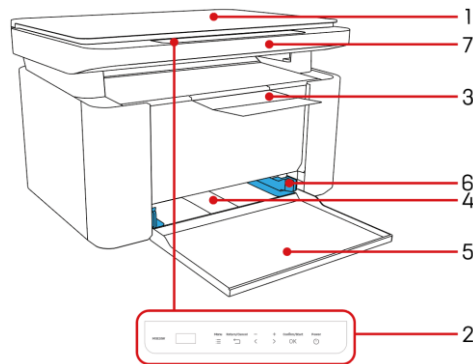
Remarks:
This table is prepared in accordance with the provisions of SJTT11364-2014.
1. O: Indicates that the content of the hazardous substance in all homogeneous materials of the component is below the limit requirement specified in GB/T 26572
2.×: Indicates that the content of the hazardous substance in at least one homogeneous material of the component exceeds the limit requirements specified in GBIT 26572.

3. All components marked "x" in the table comply with the EU ROHS regulations, and their content cannot be completely eliminated under existing technical conditions.
4. The reference identification for the environmentally friendly usage period depends on the temperature and humidity conditions under which the product operates normally.

Device introduction

Printer component

1. Scanner cover plate
2. Control panel
3. Exit tray
4. Feed tray
5. Paper feed tray
6. Width adjustment bracket
7. Scanner
8. Output bin
9. Toner cartridge
10. Power interface
11. USB port

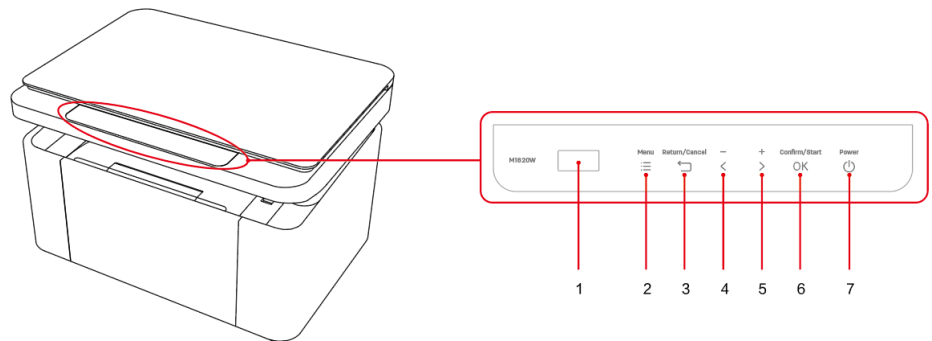


Control panel

1. Liquid crystal display
2. Menu key
3. Return/Cancel key
4. Left key
5. Right key
6. Confirm/Start key
7. Power key

▲ Note

The images are for reference only. Please refer to the actual products



Keys functions

Keypad	Key function (short press)	Key function (long press for 3s)
Menu key	Enter the menu interface	
Return/Cancel key	Please return to the upper level/cancel the current operation Reset the number of copies on the main interface	Reset copy settings on the main interface
Left key/Right key	Switch menu Reduce/increase by 1 when setting the number of copies/sleep time	Reduce/increase by 10 when setting the number of copies/sleep time
Confirm/Start key	Confirm the current operation Start regular copying on the main interface	Start ID card copying on the main interface
Power key	On	Power-off

LED indicator light

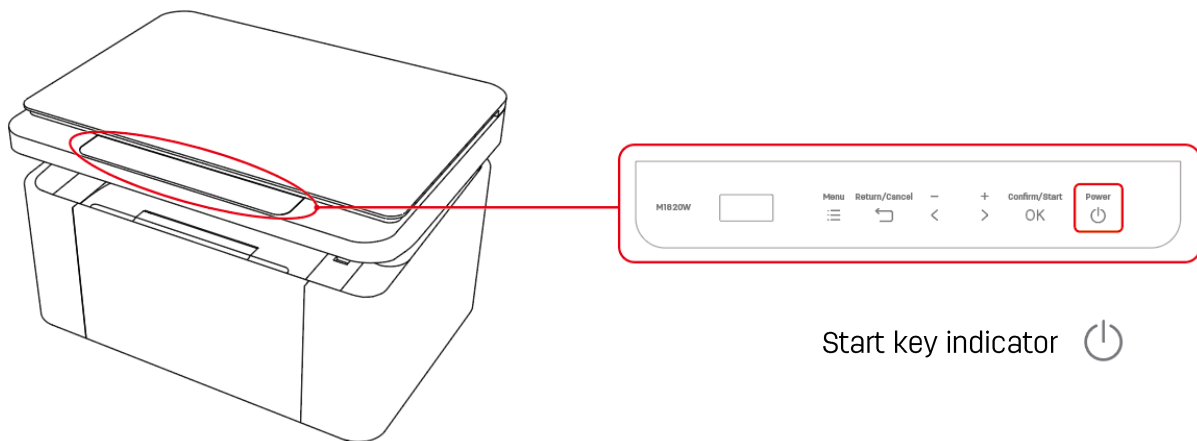
⏻ Power key indicator - displays the working status and error status of the device.

LED lighting mode

Flashing 1	On: 0.5s → Off: 0.5s
Flashing 2	On: 1s → Off: 1s
Flashing 3	On: 0.5s → Off: 3s

LED lighting meaning

LED status	LED lighting mode	LED lighting meaning
⏻White	Always on	Ready/warning status
⏻White	Flashing 1	On
⏻White	Flashing 2	Print, copy, scan and task cancellation in progress
⏻White	Flashing 3	Sleep state
⏻Red	Always on	Paper jam, no paper, no toner cartridge, and other error states
⏻Pink	Flashing 1	Firmware upgrading in progress



Initial Unpacking

1. Unpack the printer

A. Unpack the printer and check the contents



If any part is missing or damaged, please contact our distributor or customer service personnel at the Service Center.

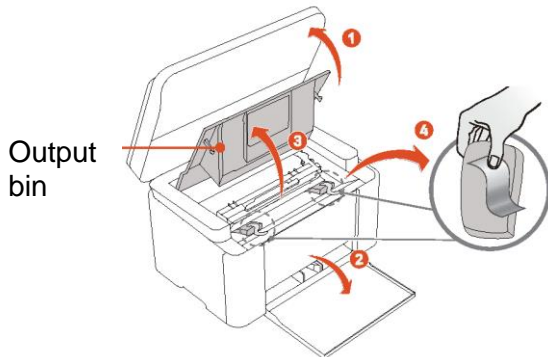
- ① Printer
- ② Supplied toner cartridge (pre-installed)
- ③ USB data cord
- ④ Power cords
- ⑤ Product Safety Manual, User Manual, Warranty Card

B. Remove the tape from the device and the protective paper under the scanner cover plate

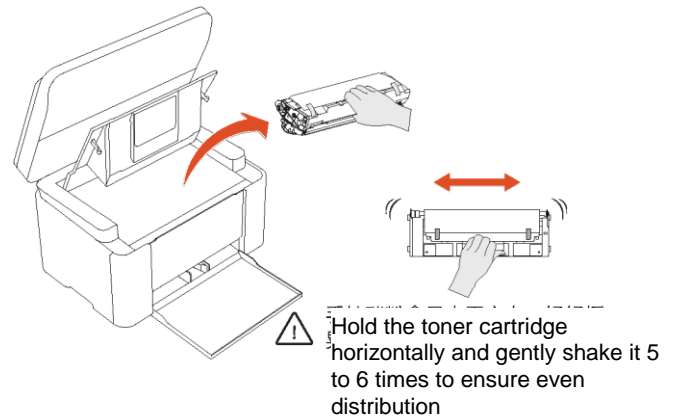


2. Install toner cartridge

A. After opening the scanner and feed tray, open the output bin to remove the tape from the device and take out the sponge



B. Remove the toner cartridge from the printer



Danger

Toner dust spills

Do not open the toner cartridge. If toner dust is released into the air, avoid contact with skin or eyes.

Do not inhale the toner dust released into the air. Please use cold water to remove toner dust from clothing or objects; hot water will cause the toner to solidify.

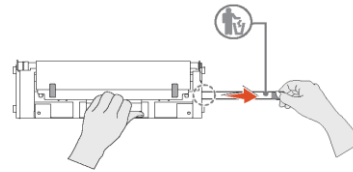
Do not use a vacuum cleaner to remove the loose toner dust.

C. Remove the tape and protective cover



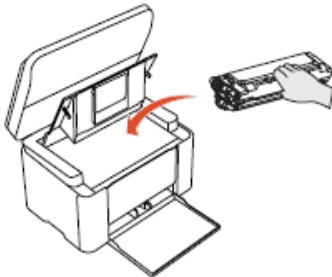
Do not touch the photosensitive drum of the toner cartridge with your hands. Do not stand the toner cartridge upright, as this may affect the printing quality or affect the printer performance

D. Pull out the sealing tape completely in the direction of the arrow



After removing the sealing tape, do not shake the toner cartridge, otherwise the toner may be released into the air

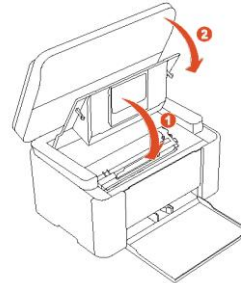
E. Install toner cartridge



▲ Caution

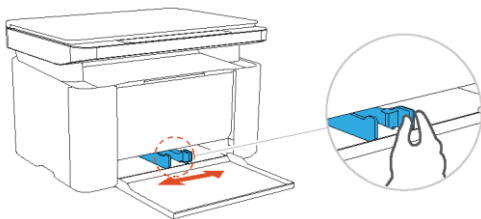
Incorrect installation of the toner cartridge. If the front cover cannot be closed, it indicates that the toner cartridge is not installed correctly. Remove the toner cartridge and reinstall it correctly

F. Close the output bin and turn off the scanner

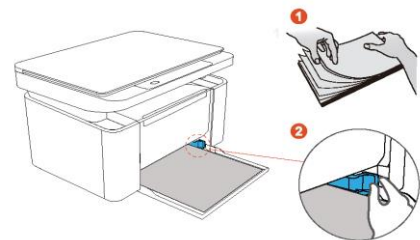


3. Put in paper

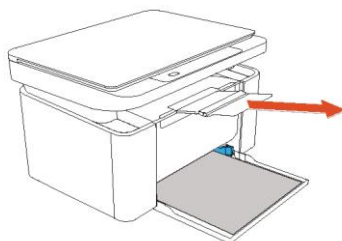
A. Pinch the blue width adjustment bracket on the right side and adjust it to the appropriate position



B. Fully unfold the stacked paper, and place it in the paper tray after aligning it neatly; Adjust the blue cardboard to fit the edge of the paper; Suggest not exceeding 150 sheets of paper*



C. Open the exit tray and extension tray

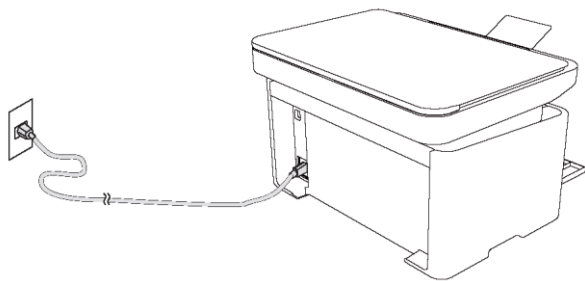


* Calculated on paper with a thickness of 70 grams per square meter

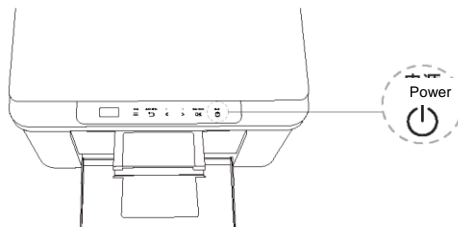
! If the exit tray is not opened during use, the paper may easily fall off after printing is completed

4. Turn on the power

A. Connect the power cord

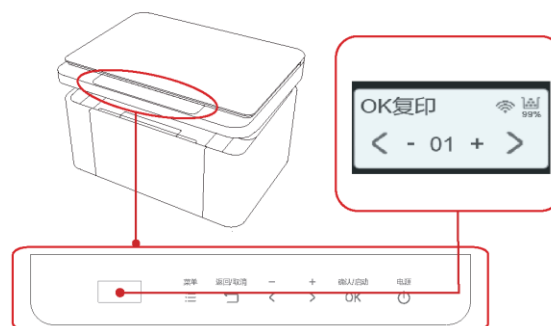
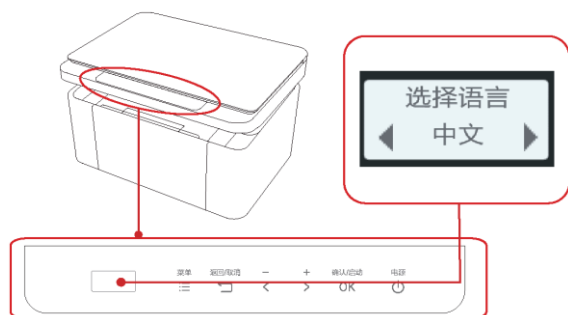


B. Press the power key on the control panel to turn on the device



5. Go to the main screen

A. When the printer is turned on, the language selection interface will be displayed.



▲ Note

Control panels vary for different models.

Connecting device

Mobile phone connection and use

A. Turn on mobile phone's Bluetooth and WLAN.



B. Search "Deli Print" in application store or scan the QR code on printer operation panel, download and install the latest Deli Print APP.

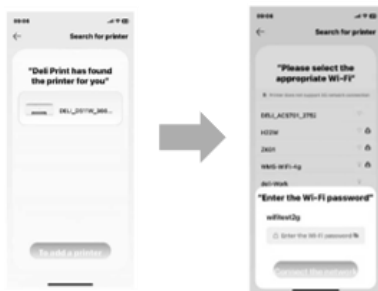


Android:
Google Play
Huawei:
App Gallery
ios:
APP Store

C. Open Deli Print APP, click "To add a printer", and then "Set up the printer".



D. Follow the prompt on the App, complete the printer WLAN connection.



Computer connection and use

Recommended operating systems

Windows®7 (64/32-bit)	Windows®8.1 (64/32-bit)	Windows Server 2008 (SP1)
Windows®10 (64/32-bit)	Windows®11	Windows Server 2008 R2 (SP1)
Windows Server 2012	Windows Server 2016	
Windows Server 2019	Windows Server 2022	

Download [Deli Print Assistant]

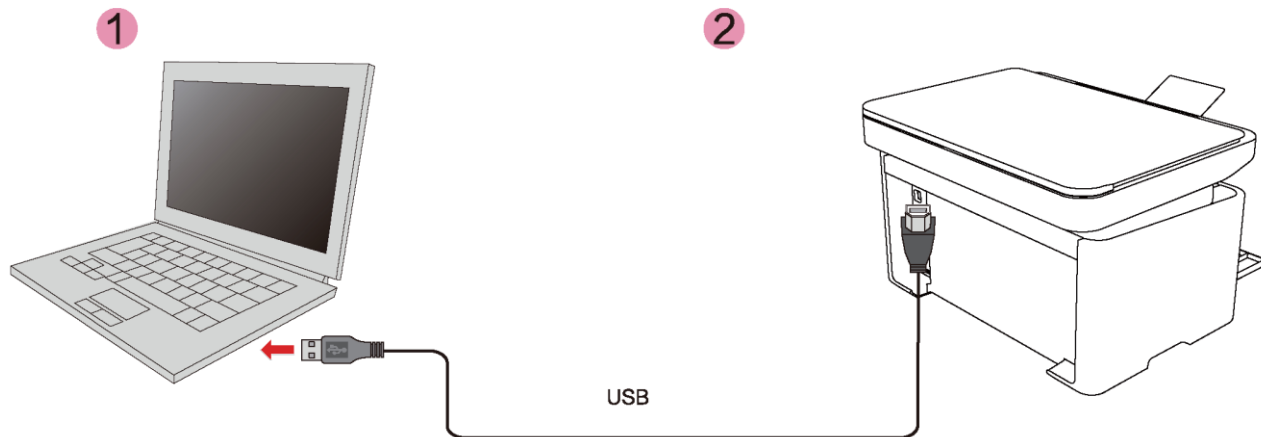
Open the browser, enter www.deliprinter.com, search for the product model "M18XX" on the Deli official website, download the "Deli printer driver downloader" or "Deli printer driver installation package".

▲ Note

It is recommended to download the "Deli printer driver installation package" if your computer cannot be connected to the network.

To add a USB printer

- ① Computer
- ② This device



▲ Note

If you choose USB connection, please ensure that the USB data cable is now connected to the computer and printer.

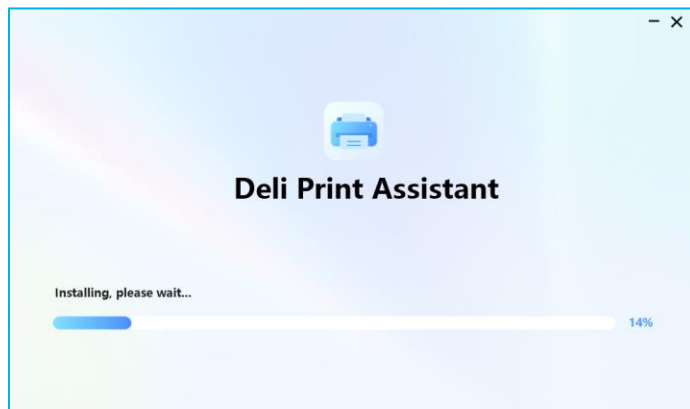
i When the [Deli Print Assistant] is not installed on your computer

1. Double-click on the Deli printer driver downloader or Deli printer driver installation package.

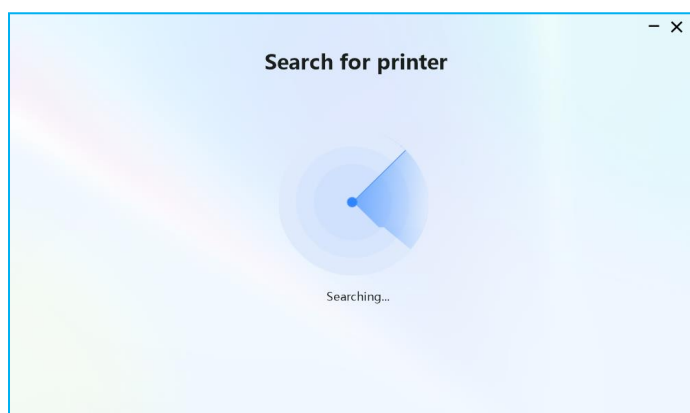
▲ Note

Your computer needs to be connected to the network at this time if the "Deli printer driver downloader" is downloaded. You need to download the Deli printer driver installation package online when double-clicking on the Deli printer driver downloader. After the download is completed, the installation interface will automatically open.

2. Select the checkbox after carefully reading the user agreement.



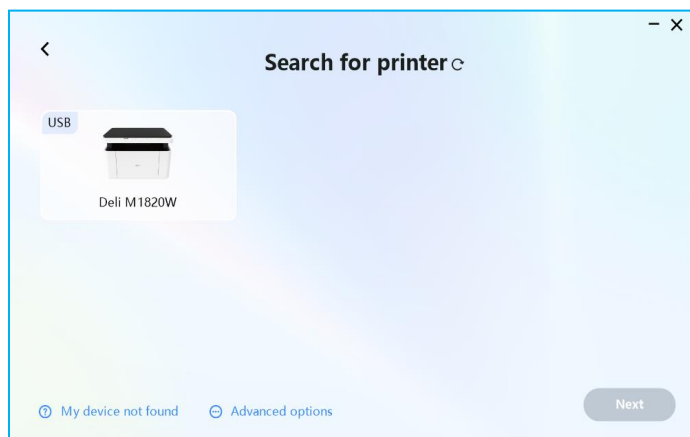
3. Click on Install, and the [Deli Print Assistant] will automatically search for printers.



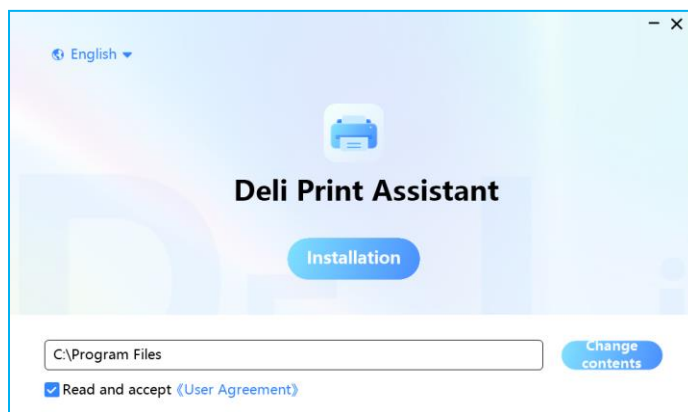
▲ Note

It is recommended to plug and remove the USB data cable again if the printer is not found. Click the Refresh button to search for the printer again after plugging and removing the USB data cable again.

4. Select the printer you want to add from the searched printer list and click Next.



5. Wait for the printer to be successfully installed.



i When the [Deli Print Assistant] is installed on your computer

1. The [Deli Print Assistant] will automatically recognize and add printers.

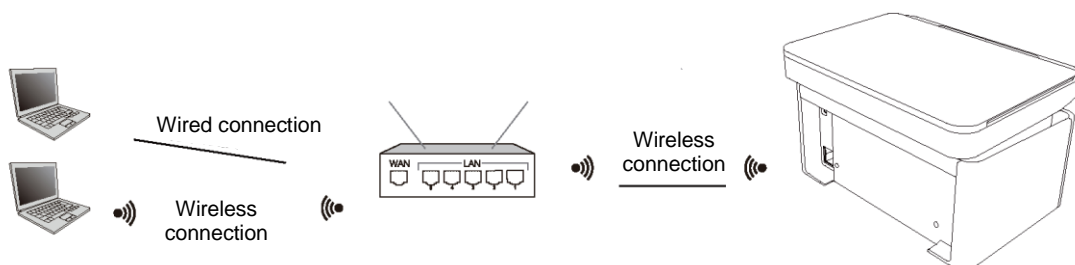
▲ Note

It is recommended to plug and remove the USB data cable again if the printer is not recognized.

To add a network printer

1 Computer

2 This device



If you choose a network connection, please ensure that your computer is currently connected to the network.

i When the [Deli Print Assistant] is not installed on your computer

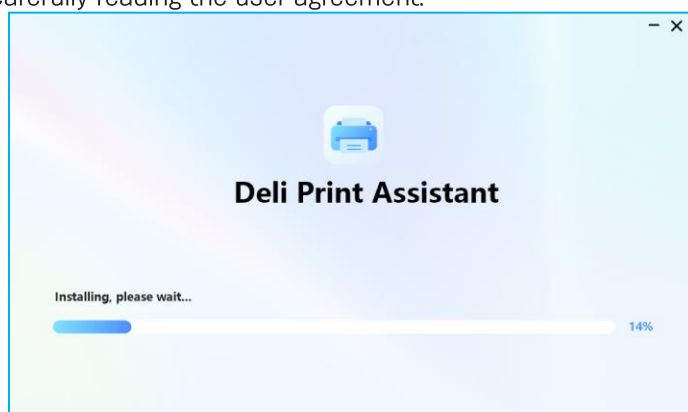
Scenario 1: If your printer is connected to the network which is the same one as your computer is connected

1. Double-click on the Deli printer driver downloader or Deli printer driver installation package.

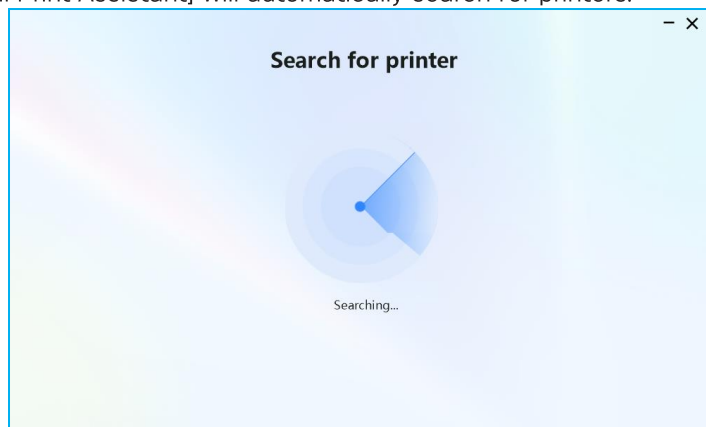
▲ Note

Your computer needs to be connected to the network at this time if the "Deli printer driver downloader" is downloaded. You need to download the Deli printer driver installation package online when double-clicking on the Deli printer driver downloader. After the download is completed, the installation interface will automatically open.

2. Select the checkbox after carefully reading the user agreement.



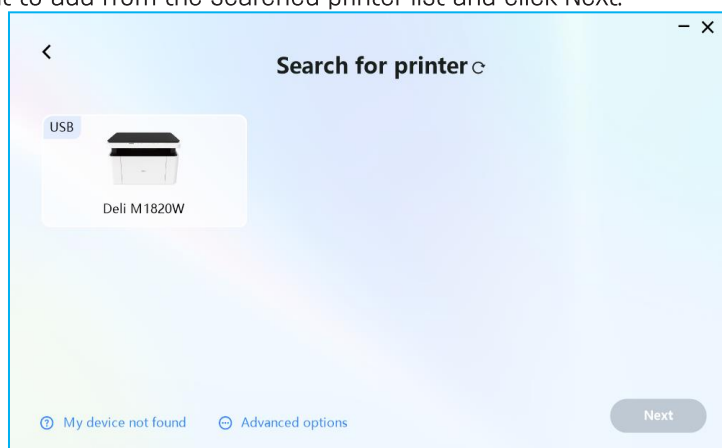
3. Click on Install, and the [Deli Print Assistant] will automatically search for printers.



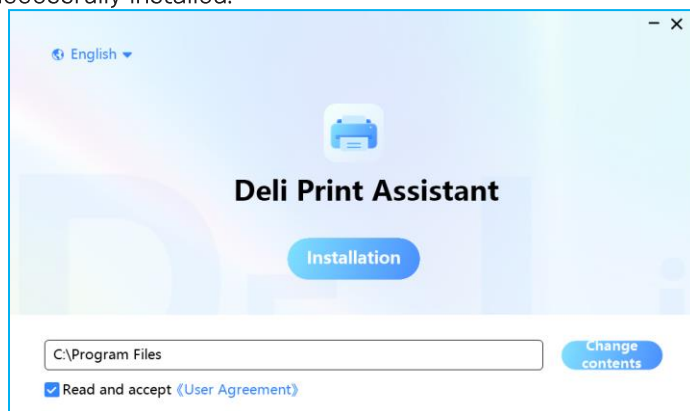
▲ Note

The [Deli Print Assistant] will search for printers on the same network as the computer by default. For different search methods, please refer to [Network Search Methods](#).

4. Select the printer you want to add from the searched printer list and click Next.



5. Wait for the printer to be successfully installed.



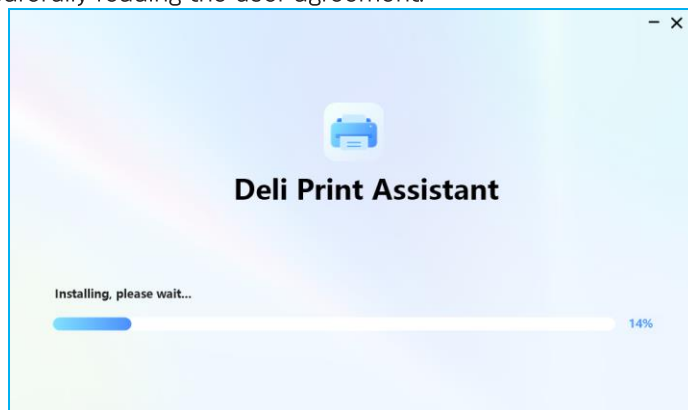
Scenario 2: If your printer is not connected to the network or is connected to the network which is not the same one as your computer is connected

1. Double-click on the Deli printer driver downloader or Deli printer driver installation package.

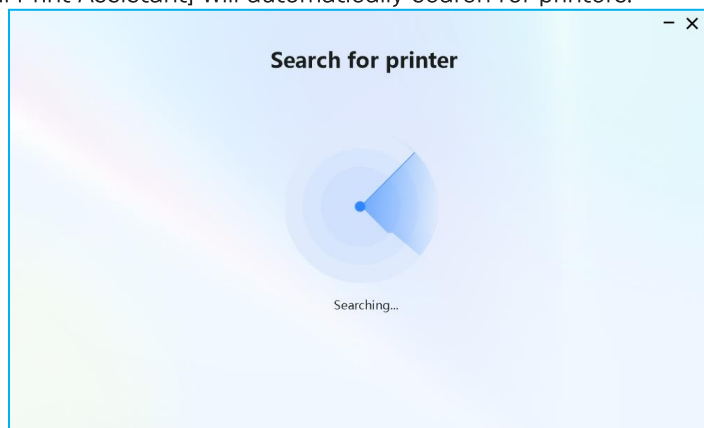
▲ Note

Your computer needs to be connected to the network at this time if the "Deli printer driver downloader" is downloaded. You need to download the Deli printer driver installation package online when double-clicking on the Deli printer driver downloader. After the download is completed, the installation interface will automatically open.

2. Select the checkbox after carefully reading the user agreement.



3. Click on Install, and the [Deli Print Assistant] will automatically search for printers.



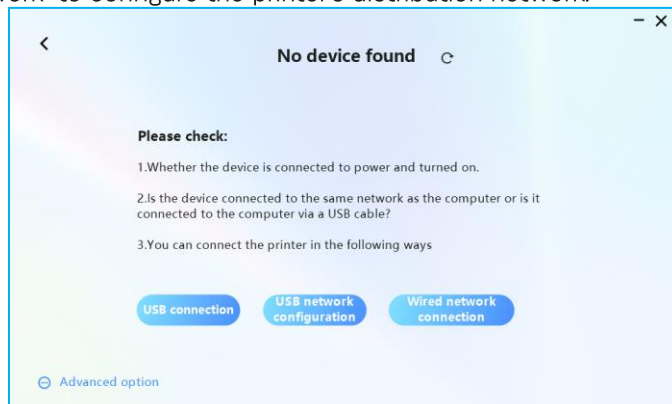
▲ Note

The [Deli Print Assistant] will search for printers on the same network as the computer by default.

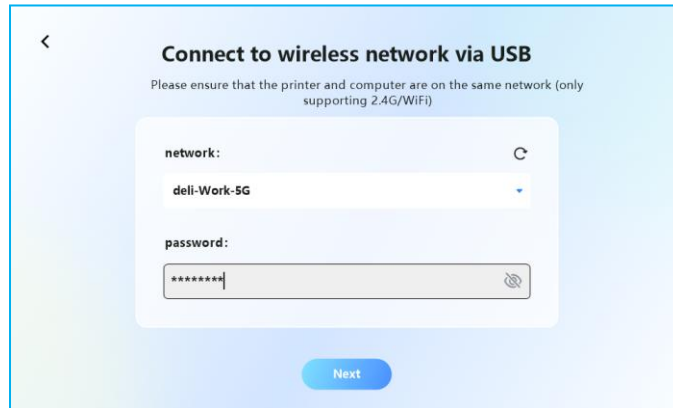
For different search methods, please refer to [Network Search Methods](#).

Because your printer is not connected to the network or is connected to the network which is not the same one as your computer is connected, the [Deli printing assistant] is unable to automatically search for the printers.

4. Select "USB distribution network" to configure the printer's distribution network.



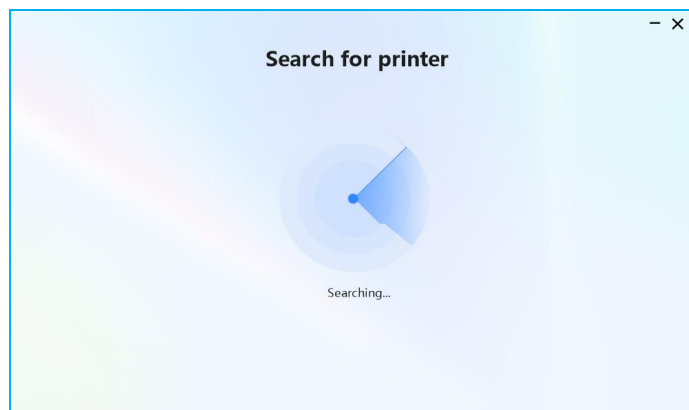
5. Select the same Wi-Fi as the computer, enter the password, and then click Next.



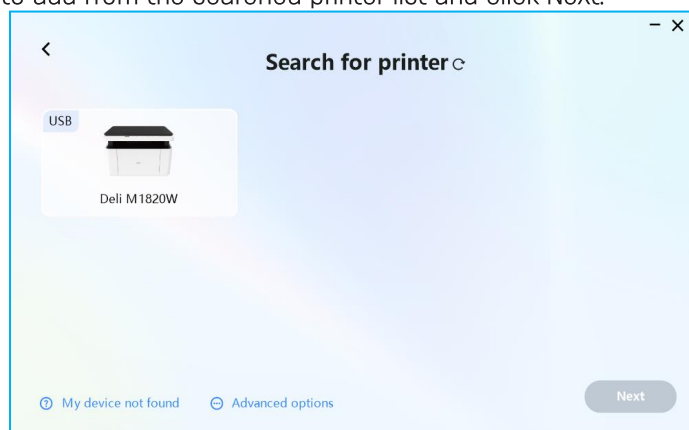
▲ Note

The printer only supports connecting to 2.4G Wi-Fi.

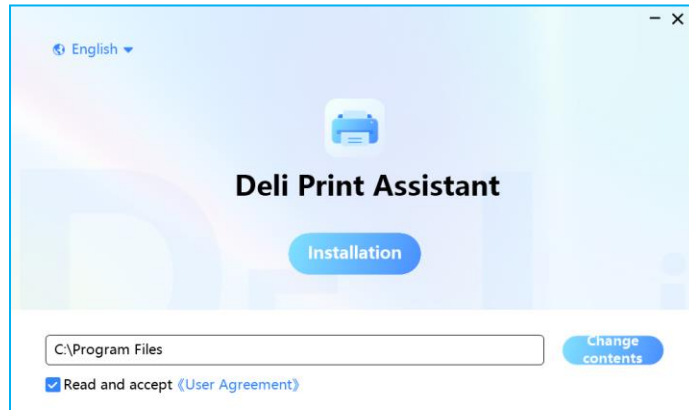
6. After the printer network is successfully configured, the [Deli Print Assistant] can automatically search for printers again.



7. Select the printer you want to add from the searched printer list and click Next.



8. Wait for the printer to be successfully installed.

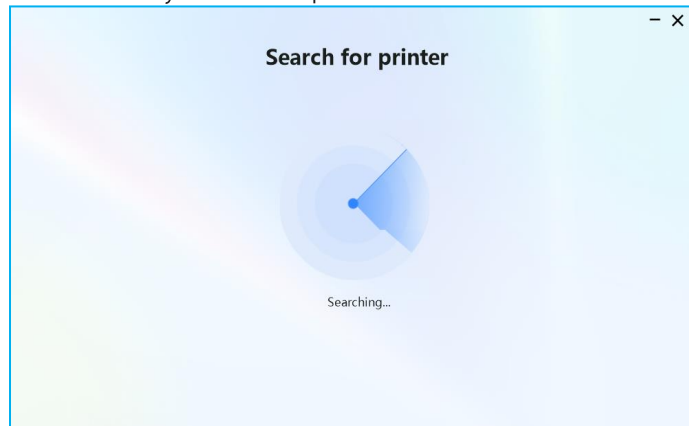


When the [Deli Print Assistant] is installed on your computer

1. Open the [Deli Print Assistant].
2. Click "Add printer".



3. The [Deli Print Assistant] can automatically search for printers.



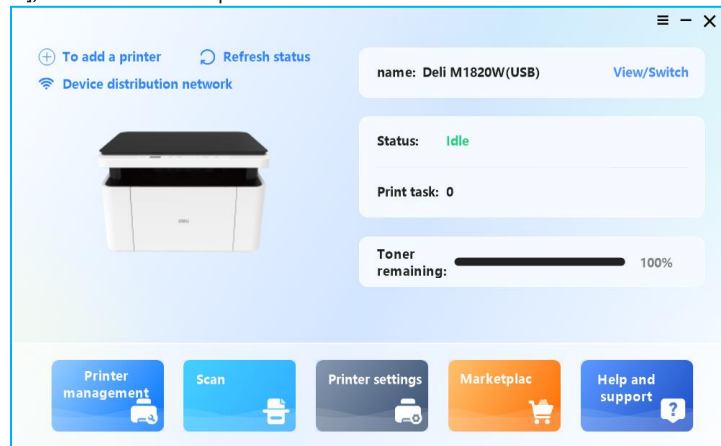
4. For the subsequent addition process, please refer to "[When the \[Deli Print Assistant\] is not installed on your computer](#)".

Network search mode

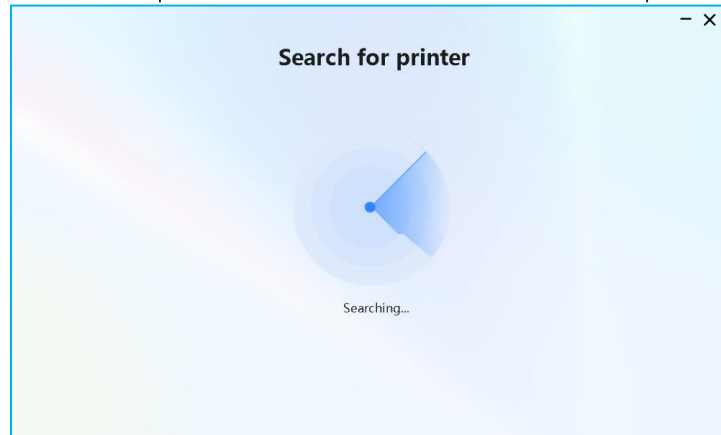
Automatically search for printers (default search method)

The [Deli Print Assistant] will search for printers on the same network as the computer by default.

1. Open the [Deli Print Assistant], and click "Add printer".



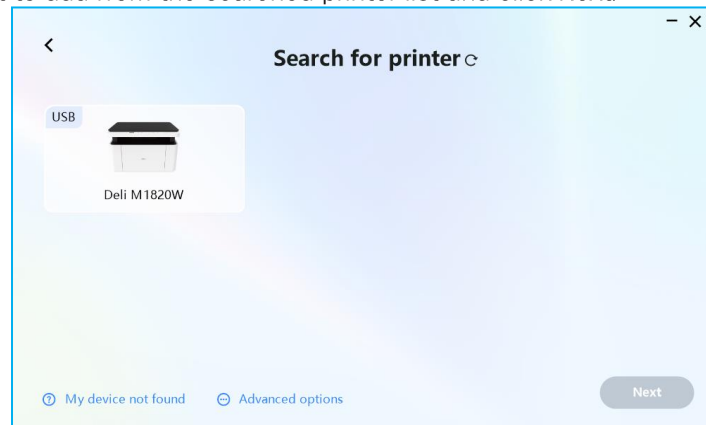
2. The [Deli Print Assistant] will search for printers on the same network as the computer by default.



If your printer is not searched:

- Please ensure that the printer is connected to the network.
- Ensure that the printer and computer are on the same network.
- Alternatively, click Refresh on the current page.

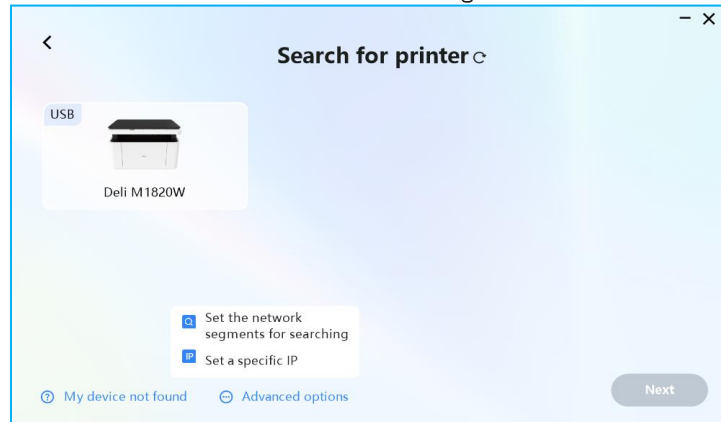
3. Select the printer you want to add from the searched printer list and click Next.



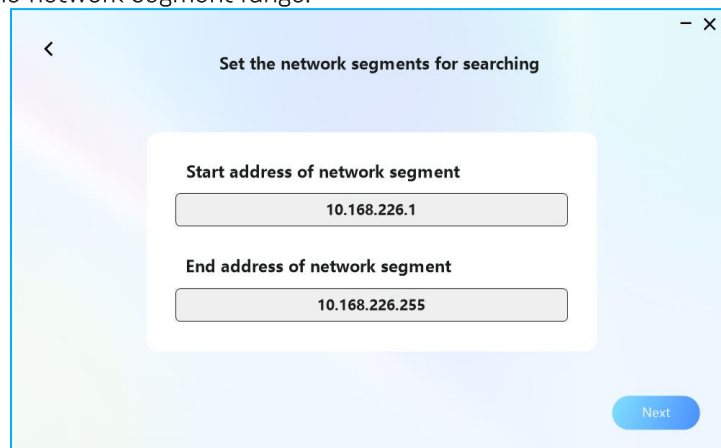
Set the network segments for searching

The printer assistant will search for printers within the set network segment range.

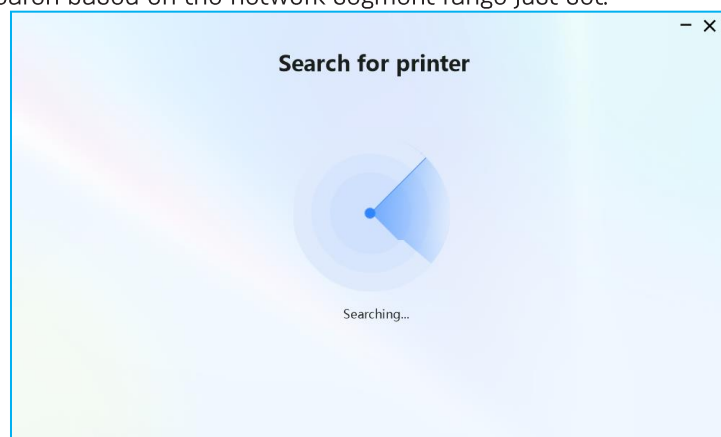
1. If you cannot find the printer you want through automatic search, please try to use the set search network segment function.
2. Click on the "Advanced" option and select "Set search network segment".



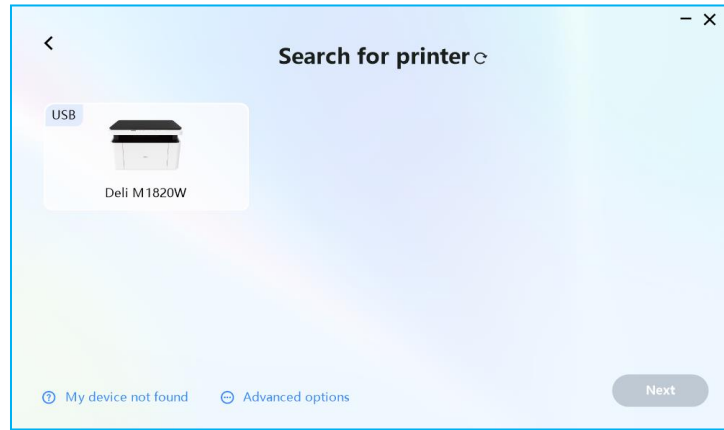
3. Click Next after entering the network segment range.



4. [Deli Print Assistant] will search based on the network segment range just set.



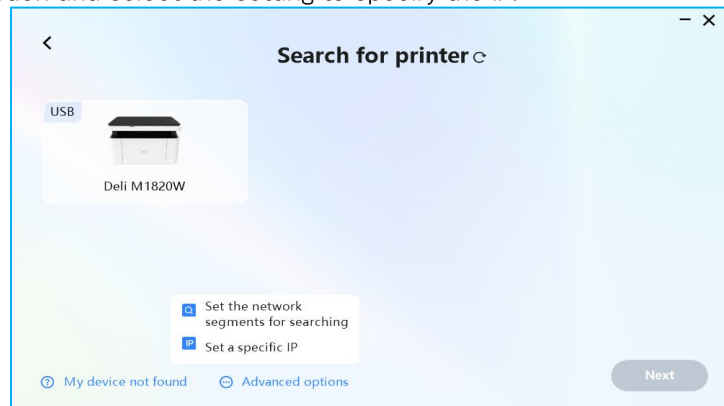
5. Select the printer you want to add from the searched printer list and click Next.



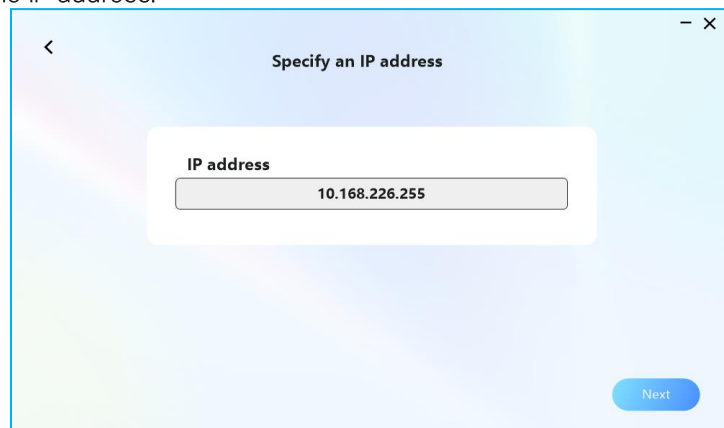
Set a specific IP

The printer assistant will search for printers with the set IP address.

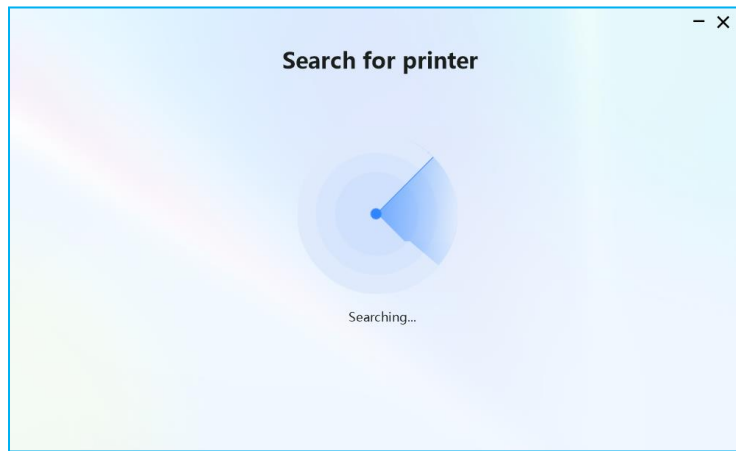
1. If you cannot find the printer you want through automatic search, please try to use the setting to specify the IP function.
2. Click on the "Advanced" option and select the setting to specify the IP.



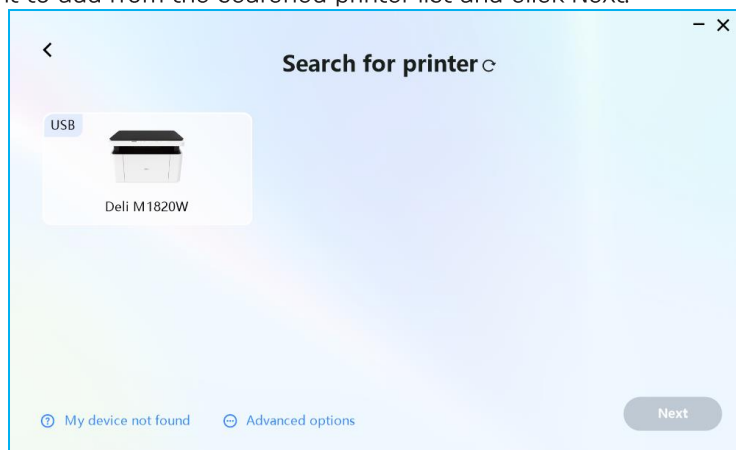
3. Click Next after entering the IP address.



4. [Deli Print Assistant] will search based on the IP address just set.



5. Select the printer you want to add from the searched printer list and click Next.



Specifications of print medium

You can put regular printing paper or preprint paper into the paper tray.

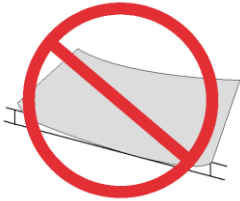
Feed tray	
Paper size	A4, A5, A5_ Horizontal, A6, B5 (JIS), B6 (JIS), B5 (ISO), B6 (ISO), 16K (184x260mm), 16K (195x270mm), Executive, Envelope #10, Envelope C5, Envelope Monarch, Envelope DL
Paper thickness	60-163g/m ²
Paper capacity	150 sheets (70g/m ²)

▲ Caution

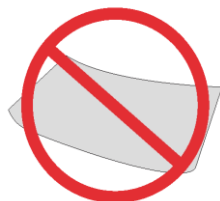
Unsuitable paper

Do not load the following kinds of papers into the paper tray.

- The paper that is wet, edited with correction fluid, stained or coated.
- The paper that is fixed together with staples, or stuck with adhesive tape or glue.
- Paper pasted with sticky notes.
- Paper with creases, wrinkles, or being torn open.
- Curled paper.



2mm or above



Bending degree

▲ Note

Curled paper

- If the paper is curled, please flatten it before use. Paper with a curl of more than 2mm may jam the device.

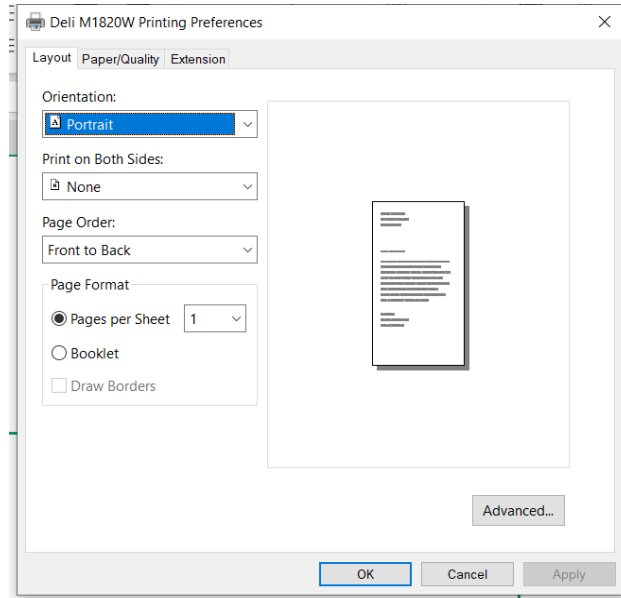
Store paper

- When storing paper, please avoid high temperature, humidity, or direct sunlight. Please keep the paper level in placement.

Print settings

Printing preferences

Layout



Direction:

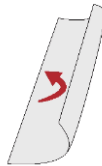
It is used to change the page direction which can be set horizontally or vertically.

Double-sided printing:

You can choose [Double-sided Printing] to use the double-sided printing function. You may choose between long side flip or short side flip



Short-side stapling



Long-side stapling

▲ Caution:

In order to have a better printing experience, it is recommended to send manual double-sided printing tasks, with each task not exceeding 50 pages (25 sheets).

Supported paper size: A4

Supported print quality: text, text and photos.

Page order:

When printing a multi-page document, set the page order as “from front to back”, and the output page order as 1, 2, 3.....

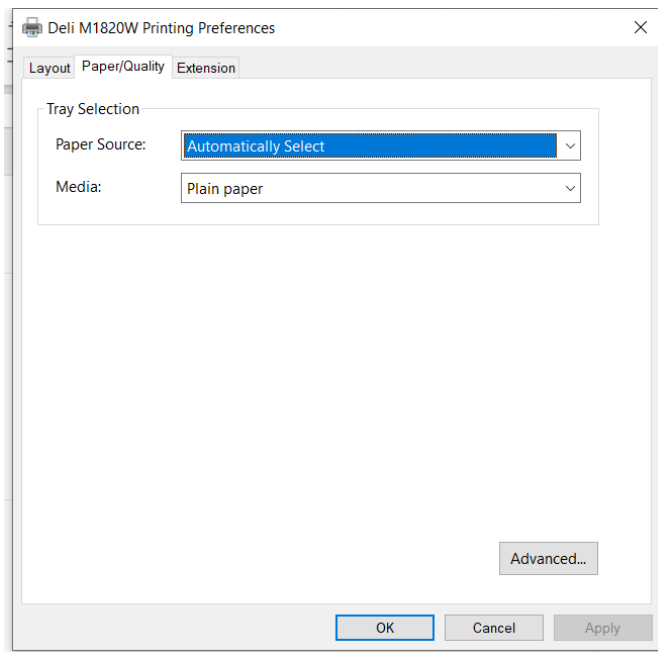
Set the page order as “from back to front”, and output page order as 3, 2, 1.

Page format:

Number of papers printed per sheet: Multi-page document can be printed on 1 sheet, and the number of pages printed per sheet can be set as: 1, 2, 4, 6, 9, 16.

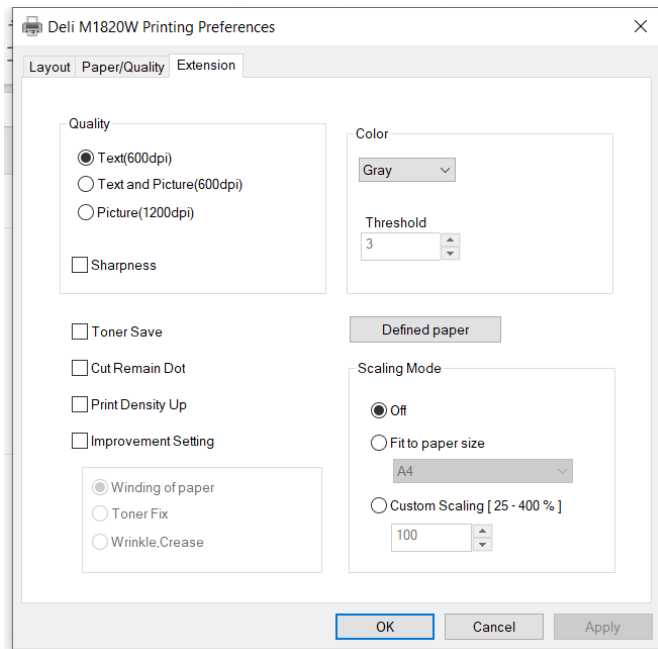
Manual: you may print a multi-page document as a manual.

Paper/Quality



Paper source: selectable paper source: automatic selection, paper tray.
Paper type: plain paper, thin paper, thick paper are available for selection.

Extended function



Print quality:

Select quality settings to match the type of printed document.

If you want to print the document, please select [Text]; If you want to print a document that combines text and photos, please select [Text and Photos]; If you want to print photos, please select [Photos].

Sharpening: If you want to increase the sharpness of the image, please check Sharpening.

Color output:

The printing output color can be selected as [monochrome] or [grayscale].

You can set the threshold value for black if the [monochrome] is selected; you can use grayscale value for printing if the [grayscale] is selected.

Save toner: If you want to save toner, please check Save Toner.

Reduce residual points: If you want to reduce the residual carbon powder, please check the option to reduce residual points.

Increase print density: If you feel that the print image density is too light, please check the option to increase print density.

Improve settings:

Reduce paper curl: If the paper is curled or wavy, please check the option to reduce paper curl.

Improve toner fixing effect: When the image has poor fixing, please check the option to improve toner fixing effect.

Improve paper wrinkling: When the paper has wrinkles or creases, please check the option to improve paper wrinkling.

Custom paper:

The paper name and size can be defined.

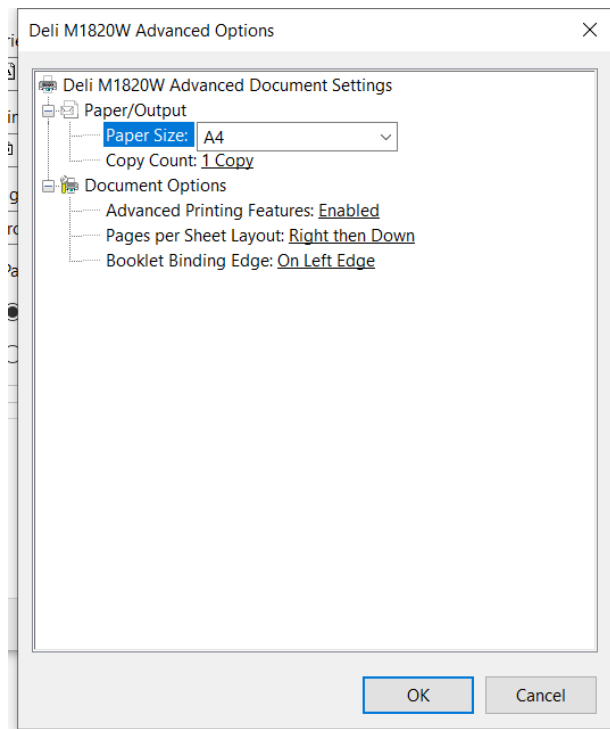
The width can be defined within the range of 76-210mm.

The length can be defined within the range of 116-297mm.

Zoom mode: You can choose to turn off, adjust to paper size, and zoom freely (25-400%).

Advanced settings

You may enter the advanced settings interface from the lower right corner of Layout and Paper/quality



Paper specifications:

Select the size of paper on which you want to print, including A4, A5, A5_ Horizontal, A6, B5 (JIS), B6 (JIS), B5 (ISO), B6 (ISO), 16K (184x260mm), 16K (195x270mm), Executive, Envelope #10, Envelope C5, Envelope Monarch, Envelope DL

Number of copies:

Enter the number of copies to be printed. If you want the document output sequence to be 1, 2, 3, 1, 2, 3....., you need to check the adjustment box.

If you want the document output sequence to be 1, 1, 1, 2, 2, 2, 3, 3, 3....., you need to uncheck the adjustment box.

Page layout printed on each sheet of paper:

This is the setting for document layout when printing multi-page documents on one sheet of paper, which may be set to: rightward then downward, downward then rightward, leftward then downward, downward then leftward.

Manual binding edge:

This is the setting for the border position when printing a multi-page document as a manual. It can be set to: at the left edge, at the right edge.

Copy

General copying

1. Open the scanner cover plate.
2. Place the original document face down on the scanner pad.
3. Please make sure that the original document is aligned with the upper left corner of the scanner plate.

Copy restrictions

Copying the following documents may be illegal.

This list is incomplete. For any questions, please consult the legal representative of your jurisdiction.

- Banknotes
- Money order
- Deposit slip
- Postage stamps (stamped or unstamped)
- Identity card or logo
- Identification badge or seals
- Compulsory military service or conscription documents
- Cheques or bills of exchange issued by government agencies
- Motor vehicle driver's license and ownership certificate
- Traveler's check
- Food stamp
- Passport
- Immigration documents
- Domestic tax revenue stamp (stamped or unstamped)
- Bonds or other debt certificates
- Share certificate
- Copyright or artwork without owner's permission

4. Close the scanner cover plate.
5. Set the number of copies: 01- 99.
On the main interface, adjust the number of copies by pressing the left and right keys.
6. You may modify the copy settings according to your own needs.
For copy settings, please refer to ["Copy Settings"](#).
7. Press the Confirm/Start key to start copying.

▲ Note

When copying is complete, remember to remove the original document from the plate.

ID card copying

1. Set the number of copies: 01- 99.

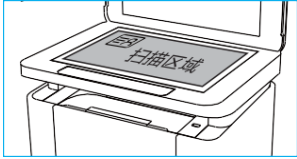
On the main interface, adjust the number of copies by pressing the left and right keys.

2. Press Menu key to enter the menu interface.
3. Select 'ID card copying' and press the Confirm/Start key to enter the ID card copying function.

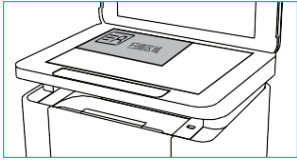
▲ Note

You can also activate the ID card copying function directly through shortcut keys, please refer to the [key functions](#).

4. Open the scanner cover plate and place the ID card in the scanning area.
Do not place it near the 10mm away from the edge area when the "ID card copy correction" function is set to "On" (On by default)



Place it in A5 area when the "ID card copy correction" function is set to "Off"



5. Close the scanner cover plate.
6. According to the interface prompt, press the Confirm/Start key to start scanning the front.
7. After the first scan is completed, flip the ID card.
8. According to the interface prompt, press the Confirm/Start key to start scanning the other side.

▲ Note

When the copying is completed, remember to remove the ID card from the plate.

Copy settings

▲ Note

You can enter the menu interface through the menu key and find the copy settings.

The [Copy settings] includes the following menus:

1. Quality
2. Density
3. Paper size

1. Quality, text by default, you can set it as text&photo, photo, invoice.
2. Density, normal by default, you can set it as +1, +2, -2, -2.
3. Paper size, A4 by default, you can set it as A5.

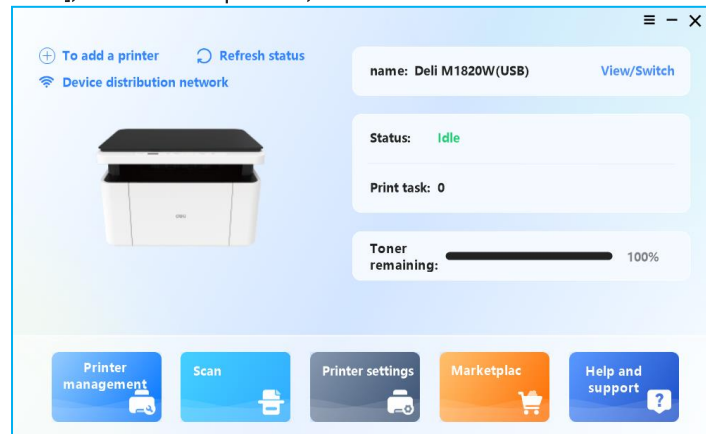
Scan

Scan with [Deli Print Assistant]

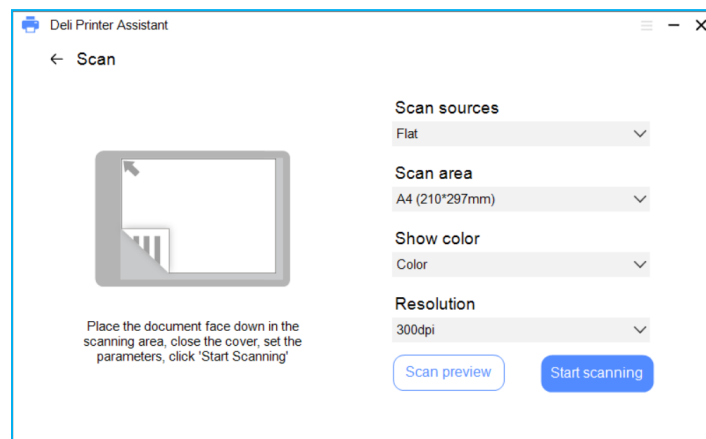
▲ Note

Before scanning from your computer, please ensure that you have installed the 'Deli Print Assistant' and added the printer. Please refer to "[Computer connection and use](#)".

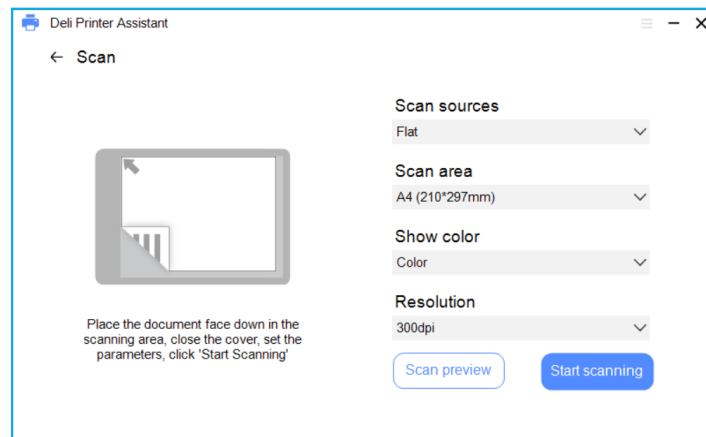
1. Open the scanner cover plate.
2. Place the original document to be scanned face down on the scanner plate.
3. Please make sure that the original document is aligned with the upper left corner of the scanner plate.
4. Close the cover plate of the scanner.
5. Open the [Deli Print Assistant], select the printer, and click Scan.



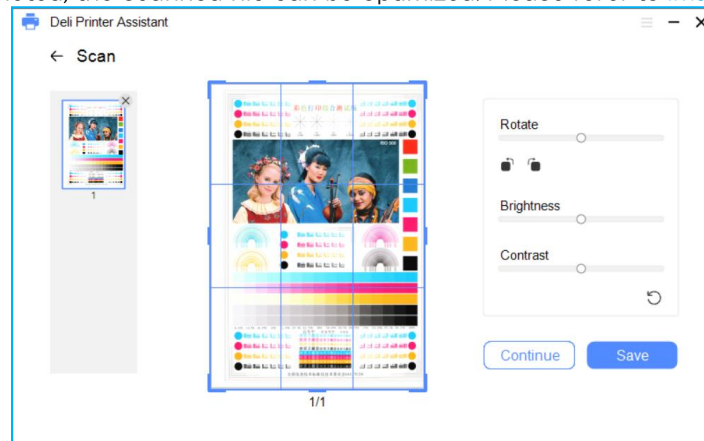
6. You can modify the basic scanning settings according to your own needs, please refer to the [basic settings](#).



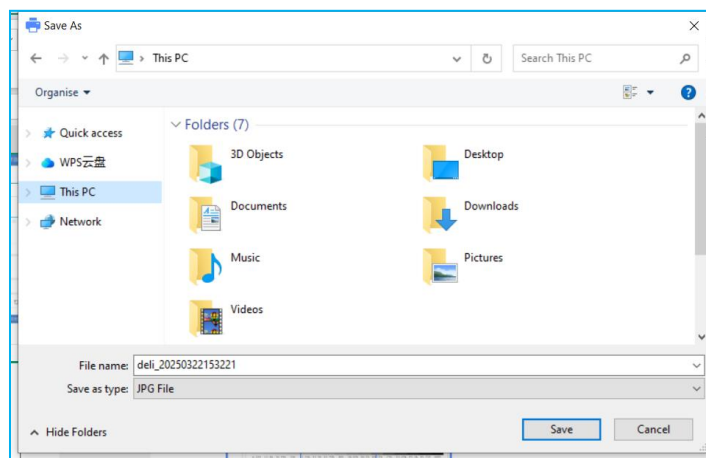
7. Click Start scanning.



8. After the scanning is completed, the scanned file can be optimized. Please refer to [image optimization](#).

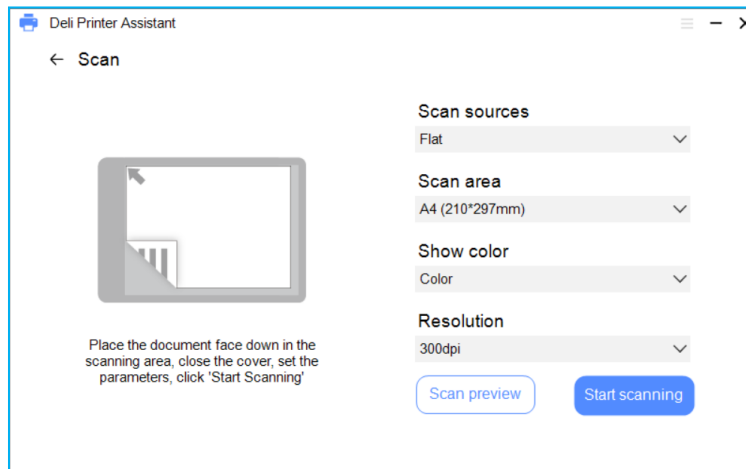


9. If the further processing is not required, click on "Save Document", select the save location, set the save file name and save type.



[Deli Print Assistant] - scan settings

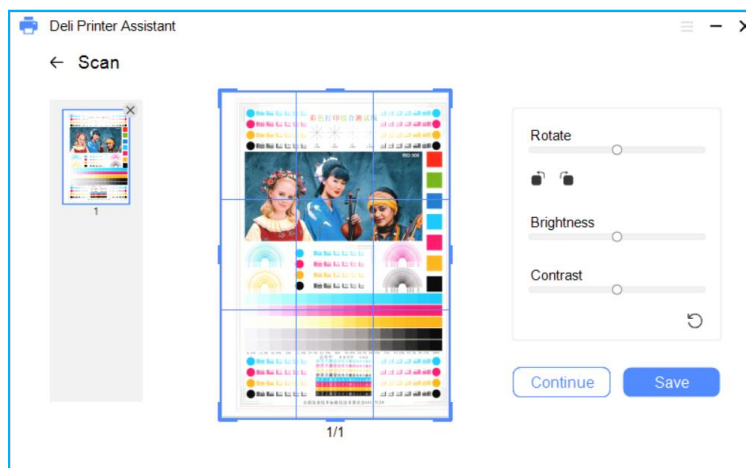
Basic settings



Before starting the scan, you can modify the basic scanning settings according to your own needs.

1. Scan source
Available paper source: tablet.
2. Scan area
Optional storage types: A4, Entire scanning area, Letter, JIS B5, A5.
3. Show color
Optional color formats: color, black and white.
4. Resolution
Optional scanning resolution: 300dpi, 600dpi, 1200dpi.
5. Preview scan
You can preview the scanned artwork first.

Image optimization



After the scanning is completed, you can optimize the scanned images according to your own needs.

1. Adjust the sequence
Drag the left preview image up or down to adjust the image sequence.
2. Delete any page
Select the preview image on the left and click the button in the upper right corner of the preview image to delete the current page.
3. Cropping
Drag the blue cropping box, the user can crop the image size.
4. Rotate
Drag the rotation progress bar button to adjust the angle of the image.
Or click the rotation button, rotate 90° to the left and 90° to the right.
6. Brightness

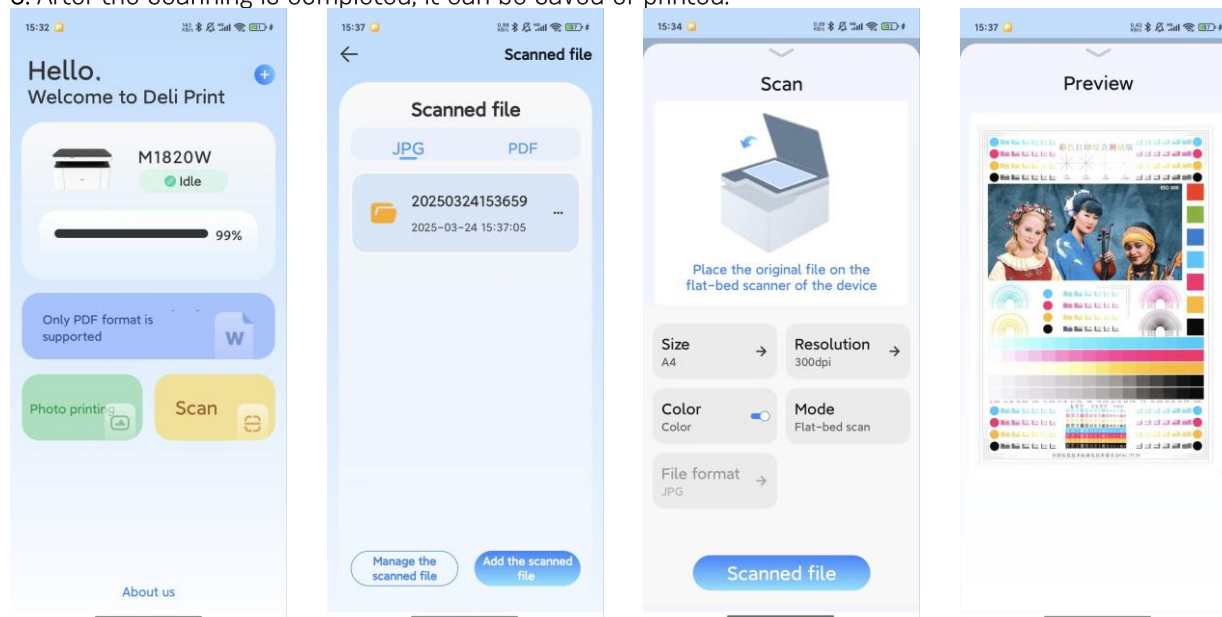
- The brightness of the image can be adjusted.
- 7. Contrast
The contrast of the image can be adjusted.
- 8. Reset
Parameters can be reset.
- 9. Continue scanning
Continue scanning the artwork.

Scan with [Deli Print] APP

▲ Note

Please ensure that you have added the printer to APP before scanning with [Deli Print] APP. Please refer to [Mobile phone connection and use](#).

1. Open [Deli Print] APP on your device
2. Make sure your printer is in a ready state on the main screen of [Deli Print] APP.
3. Click on Document scanning, click on Add scanned file, and adjust Scanning settings.
4. Click on Scanning document to start scanning
5. After the scanning is completed, it can be saved or printed.



Push scanning with printer

▲ Note

Ensure that Deli Print Assistant is open on the computer and that a printer has been added, please refer to [computer connection and use](#).

1. Open the scanner cover plate.
2. Place the original document to be scanned face down on the scanner plate.
3. Please make sure that the original document is aligned with the upper left corner of the scanner plate.
4. Close the scanner cover plate.
5. Press Menu key to enter the menu interface and find Scan to menu.

▲ Note

You can modify the scanning settings according to your own needs, please refer to [Push scanning-scanning settings](#).

6. Press the left and right keys to select the computer, and press the Confirm/Start key to confirm the selection.
7. Press the Confirm/Start key to start scanning.
8. After scanning is completed, you can choose whether to continue scanning according to the interface prompts.
If you want to continue scanning, replace the scanning copy and press the Confirm/Start key to start scanning again.
If the scan is completed, press the Return key to end the scan.
9. After the scan is completed, the computer will automatically save the scanned file and open the folder where the scanned file is saved.

Push scanning-scanning settings

▲ Note

You can enter the menu interface through the menu key and find the scanning settings.

The [Scanning settings] includes the following menus:

1. Scan color
2. Resolution
3. Save type

1. Scan color, color by default, you can set it as black and white.
2. Resolution, 300dpi by default, you can set it to 200dpi or 150dpi.
3. Save type, PDF by default, you can set it as JPG.

Use of Web Services

Web service introduction

The Web interface can be used on all operating systems.

The user can access the web interface with the browser on his computer and make various settings for the device. If the device is connected to the network through a wireless connection, it can access the Web interface.

▲ Note


Please ensure that the computer and the device are connected to the same network.

Access Web interface

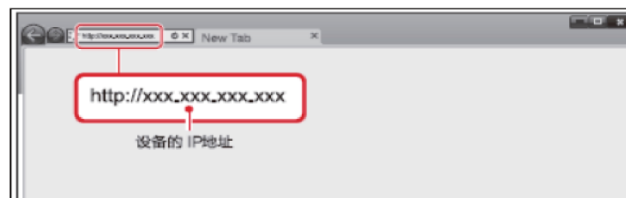
1. To access the Web interface, you will need the access address and login password of the Web interface.

▲ Note

You can enter the menu interface through the menu key, find the print report, and query the above information by configuring the report.



2. On the computer, open a browser and enter the access address for the WEB interface. For example, type the following address in the browser: <http://192.168.X.XX>.



3. To view settings other than [Device Status], the user needs to log in by entering the password.

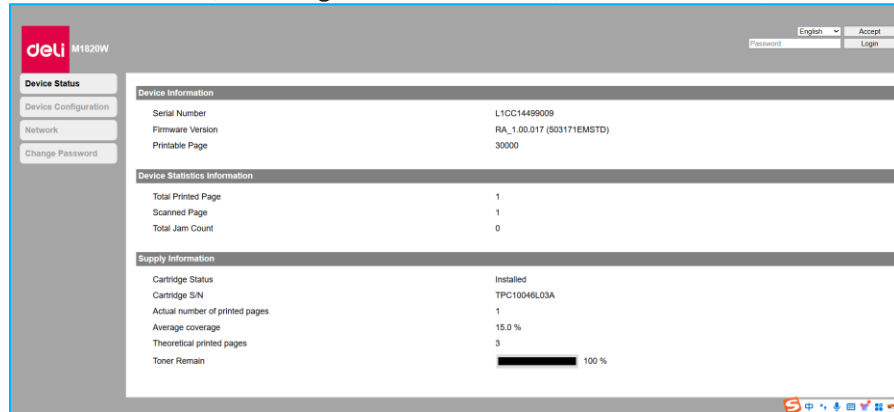
▲ Note

The default password is 'admin', which can be changed through the [Change Password] menu card.

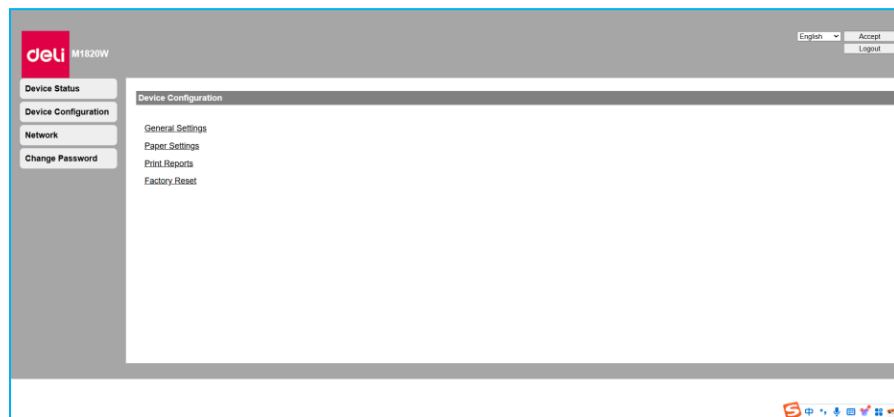
Web service function

I. Device status

You can check the status of the device, including device information, device statistics, and consumables information.



II. Equipment configuration



1. General settings:

Sleep waiting time: You can change the time required before the device enters sleep mode: close, 1 minute - 240 minutes.

▲ Note

You can also change the sleep time by using the control panel.

2. Paper settings: You can change the paper size to A4 or A5.

3. Print report: You can print the configuration report.

▲ Note

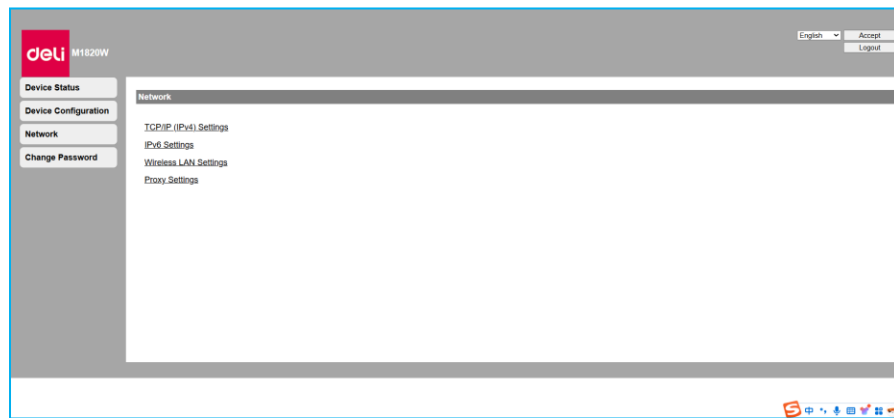
You can also print the configuration report by using the control panel.

4. Restore factory settings: You can reset all settings of this device to the factory default settings.

▲ Note:

After resetting to factory settings, the device will automatically restart and the Web interface call will be disconnected due to network disconnection.

III. Network



You can confirm or set the status of the network as necessary. If you are not familiar with network management, please use the default settings.

▲ Note

To manually assign IP addresses, please proceed with caution. Incorrect IP address entered will result in impossibility to connect to the device. After configuration changes, if you are unable to connect to the device, please reset the device.

When changing the network connection of the device, the Web interface call will be disconnected. If necessary, please reconnect to the Web interface.

1. TCP/IP (IPv4) setting: You can change settings such as IP address.

▲ Note

The initial value of the IP acquisition is DHCP.

2. IPV6 setting: You can set the host name in this mode, and view the IP address and prefix length of this device.

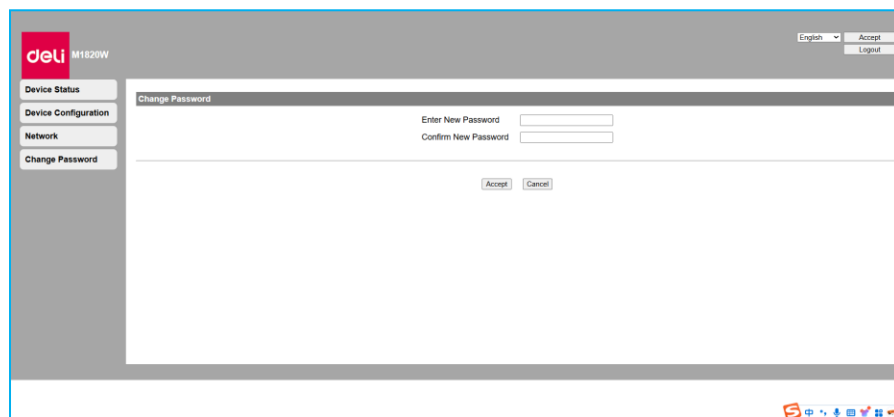
3. Wireless LAN setting: You can change the connection settings by setting the network name (SSID)/security mode/password for the wireless connection.

▲ Note

After changing the wireless network connection, the Web interface call will be disconnected. If necessary, please reconnect to the Web interface.

4. Proxy server setting: You can connect to the network through a proxy server.

IV. Change password



You can change the login password for the Web interface.

The password can only contain half width alphanumeric characters, with a character length range of 5 to 32.

▲ Note

Please do not forget your password after changing it.

If you forget your password, you can reset all settings such as password to factory default settings by resetting to factory settings.

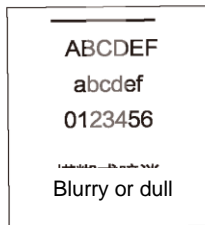
After resetting to factory settings, you can log in with the default password "admin".

Using the default password 'admin' allows full access to all settings, but there may be unauthorized third-party access. It is recommended that you change the password.

Routine maintenance

Replace toner cartridge

When the toner is running low, white stripes may appear on the printer, or some parts may fade.



Confirm before replacing the toner cartridge

If the above issues occur, please follow the steps below to check if the problem can be solved:

1. Open the output bin after opening the scanner and feed tray.
2. Take out the toner cartridge.
3. Shake the toner cartridge 5 to 6 times from front to back to shake up the toner.
4. Load the toner cartridge into the printer.
5. Close the output bin and turn off the scanner.

Please try printing the document again. Please replace the toner cartridge if the problem persists.

Steps for replacing toner cartridge

Note:

Please use genuine Deli toner cartridge.

1. Open the output bin after opening the scanner and feed tray.
2. Take out the toner cartridge.



Danger

Toner spills

Carefully remove the toner cartridge from the device to avoid toner spills.

Please store the opened or used toner cartridges in their original packaging or plastic bags to prevent toner from spilling.

When disposing of toner cartridges, do not throw them into flames.

Toner cartridges should be kept out of reach of children.

3. Remove the new toner cartridge from the packaging box.
4. Remove foam and black bags.



Danger

Toner spills

Do not attempt to disassemble the toner cartridge. If toner is released into the air, avoid contact with skin or eyes.

Do not inhale the toner released into the air. Please use cold water to remove toner from clothing or objects; hot water will cause the toner to solidify.

Do not use a vacuum cleaner to remove the spilled toner.

5. Remove the tape and protective cover.

Note:

Do not touch the photosensitive drum of the toner cartridge with your hands. Do not stand the toner cartridge upright, as this may affect the printing quality or affect the printer's performance.

6. Shake the toner cartridge 5 to 6 times from front to back to shake up the toner.
7. Pull out the sealing tape completely in the direction of the arrow.

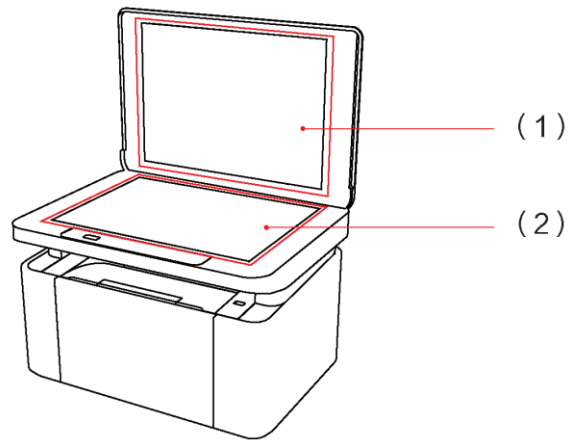
Note:

Please do not shake the toner cartridge after removing the protective strip. Otherwise, the toner may be released into the air.

8. Install toner cartridge
9. Close the output bin and turn off the scanner.

Clean the scanner

1. Wet a clean, lint free soft cloth.
2. Gently wipe the underside (1) of the scanner cover and the scanner plate (2). (As shown in the figure below)
3. Use a dry, lint free soft cloth to wipe off any remaining moisture.



Troubleshooting

Printer error

The printer screen displays error or warning messages. Please refer to the following suggested solutions.

Screen Tips	Causes of Error	Actions
Fault #xxxx Please power off and reboot	The printer has a system error	Please power off the printer and restart it. If the error persists after restarting, please contact our customer service
Fault #xxxx Reboot or contact the customer service	The printer has a system error	Please power off the printer and restart it. If the error persists after restarting, please contact our customer service
Insert paper or reposition paper	Reason 1: There is no paper in the paper tray. Reason 2: There is paper in the paper tray, but the printer was unable to successfully rub the paper due to the skewed placement of the paper.	Solution 1. Put paper in the paper tray. Solution 2: Please take out the paper from the paper tray, and place it in the paper tray after aligning it neatly. Adjust the blue cardboard to fit the edge of the paper. Please refer to "Put in paper" .
Paper jam, please take out the paper	Paper jam occurs in the printer	Remove the paper jammed in the printer and follow the on-screen prompts to cancel the task or continue printing. Please refer to the paper jam .
Incorrect printing settings	Abnormal data occurred during data parsing for printing.	Please try to send the print task again.
Improper paper size	The printer detected that the actual paper length does not match the set value.	Check the paper size in the printing settings and in the paper tray. To continue printing, please press the Confirm/Start key. To change the print settings, please press the Return/Cancel key to cancel the current print task and resend the correctly set print task.
Improper paper size Please set it again	The printer detected that the actual paper length does not match the set value.	Check the paper size in the printing settings and in the paper tray. To change the print settings, please resend the correctly set print task.
The output bin has been opened. Please close the output bin	The output bin of the printer is not closed or not completely closed. For the specific location of the paper tray, please refer to the printer components .	Please check if the output bin is completely closed and close the output bin.
The printer has exceeded its service life	The printer has exceeded its designed service life!	For any inquiry or to replace the device with a new one, please consult the service center.
Insufficient memory Please reboot the printer	The printer's memory is full.	Please power off the printer and restart it.
Device cooling down, please wait	The printer overheats internally and the printer automatically enters cooling mode. At this point the printing speed slows down or printing stops.	Wait for the printer to cool down. When the internal temperature of the printer returns to normal, the printer will automatically end the cooling mode.

IP address conflict Please set it again	The IP address of the printer is the same as that of other devices.	Modify the IP address of this device.
Toner cartridge not matched Please replace the toner cartridge	The installed toner cartridge is dirty or is not the compatible toner cartridge model.	Please try to clean the chip surface of the toner cartridge by using a soft dry cloth or replace it Please use genuine and compatible Deli toner cartridge model.
Toner cartridge error Please reinstall the toner cartridge	The installed toner cartridge is dirty or is not the compatible toner cartridge model.	Please try to clean the chip surface of the toner cartridge by using a soft dry cloth or replace it Please use genuine and compatible Deli toner cartridge model.
The remaining amount of toner is small, please prepare a new toner cartridge	The remaining amount of toner is less than 15%.	Please prepare a new toner cartridge in advance. Please refer to "Replace the toner cartridge" .
Out of toner. Please change the toner cartridge	Out of toner.	Please prepare a new toner cartridge in advance. Please refer to "Replace the toner cartridge" .
No toner cartridge is detected, please install the toner cartridge	The toner cartridge is not installed.	Install toner cartridge.
Device cleaning, please wait	The device is in cleaning mode.	Wait for the printer cleaning work to be completed. The printer will automatically end the cleaning mode after it completes the cleaning task.

Paper jam

There is a paper jam inside the device during the printing process. Please refer to the following suggested solutions.

Understand how to avoid paper jams

Please ensure that the paper you are using meets Deli paper specifications. Please refer to [Specifications](#) of print medium.

Please ensure that the quantity of paper in the paper tray meets the required quantity. Please refer to [Specifications](#) of print medium.

Adjust the cardboard in the paper tray to fit the edge of the paper. Prevent paper jams caused by skewed paper.

Make sure the paper in the paper tray is flat. Prevent paper jams caused by paper curling.

Do not add paper while printing. Prevent paper jams during the process of rubbing paper.

Timely remove the printed paper from the exit tray. Prevent paper jams caused by congestion at the paper outlet.

Remove the jammed paper in the paper tray

1. Slowly pull out the jammed paper from the paper tray
2. Follow the screen prompts to operate.

▲ Note

Press the Confirm/Start key to continue performing the remaining printing tasks; Press the Return/Cancel key to cancel this printing task.

Remove the jammed paper in the output bin

1. Open the scanner
2. Slowly pull out the jammed paper from the printer
3. Close the scanner
4. Follow the screen prompts to operate.

▲ Note:

Press the Confirm/Start key to continue performing the remaining printing tasks; Press the Return/Cancel key to cancel this printing task.

Paper refeeding

Multiple printing papers are simultaneously fed into the device during the printing process. Please refer to the following suggested solutions.

1. Please remove all the printing paper from the paper tray.
2. Fully unfold the stacked paper, and place it in the paper tray after aligning it neatly. Please refer to ["Put in paper"](#).

Image problems





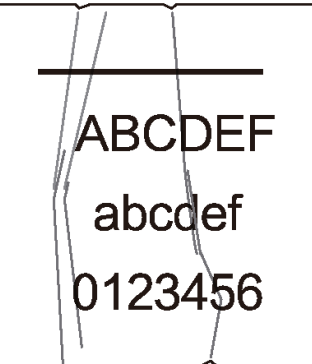
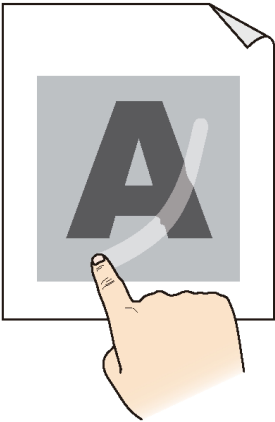
Image problem example	Recommendation.
 <p>Page skew</p>	<p>If the printed image is skewed, please refer to the following suggested solutions.</p> <ol style="list-style-type: none">1. Adjust the cardboard in the paper tray to fit the edge of the paper. Please refer to "Put in paper".2. Gently push the outer edge of the paper to ensure that it is properly installed.
 <p>Blurry or dull</p>	<p>If the printed image is blurry or dull, please refer to the following suggested solutions.</p> <ul style="list-style-type: none">● Take out the toner cartridge, shake the toner cartridge 5 to 6 times from front to back to shake up the toner.● If the screen prompts "the remaining amount of toner is small, please prepare a new toner cartridge", please refer to "Replace the toner cartridge".● You can optimize the print image by setting the print preference to increase the print density. Please refer to the extension function.
 <p>Residual point</p>	<p>If there are residual points in the printed image, please refer to the following suggested solutions.</p> <ul style="list-style-type: none">● Please ensure that the paper you are using meets Deli paper specifications. Please refer to Specifications of print medium. Paper with rough surface or thick/thin/poor quality/moisture absorbing printing media may cause problems.● You can optimize the print image by setting the print preference to decrease the residual points. Please refer to the extension function.

Image problem example	Recommendation.
 <p>Curling or waving</p>	<p>If the printed paper appears curled or wavy, please refer to the following suggested solutions.</p> <ul style="list-style-type: none"> ● Please ensure that the paper you are using meets Deli paper specifications. Please refer to Specifications of print medium. Unsupported paper specifications may cause this issue. ● You can optimize the print image by setting the print preference to reduce the paper curl. Please refer to the extension function.
 <p>Wrinkles or creases</p>	<p>If the printed paper appears wrinkles or creases, please refer to the following suggested solutions.</p> <ul style="list-style-type: none"> ● Please ensure that the paper you are using meets Deli paper specifications. Please refer to Specifications of print medium. Unsupported paper specifications may cause this issue. ● Confirm paper quality. Using inferior paper may cause this issue. ● You can optimize the print image by setting the print preference to improve the paper wrinkle. Please refer to the extension function. ● Please ensure that the paper is correctly loaded into the paper tray, please refer to "Put in Paper".
 <p>Poor fusing</p>	<p>If the printed content has poor fixing, please refer to the following suggested solutions.</p> <ul style="list-style-type: none"> ● Please ensure that the paper you are using meets Deli paper specifications. Please refer to Specifications of print medium. Unsupported paper specifications may cause this issue. ● Confirm paper quality. Using inferior paper may cause this issue. ● You can optimize the print image by setting the print preference to improve the toner fixing effect. Please refer to the extension function.

[Deli Print Assistant] - installation failed

If the [Deli Print Assistant] is not successfully installed, please refer to the following suggested solutions.

1. Please confirm if the computer system version supports this driver version. Please refer to "[Recommended operating systems](#)".
2. Go to the control panel to uninstall the driver, wait for the computer to uninstall and restart, and try reinstalling again.

Printing problem

The printer does not respond when sending the print task

If the printer does not respond when sending the print task, please refer to the following suggested solutions.

- Please confirm if the printer is turned on.
 - Please confirm if the printer is ready.
- If there is an error message on the printer screen, please first resolve the error message. Please refer to "[Printer error](#)".
- Please confirm if the printer you have chosen is the one you wish to connect to.
 - Confirm if the printer and the computer are connected properly.
- If it is a USB connection, please confirm if the USB data cable is connected to the printer and computer.
- If it is a network connection, please confirm that both the printer and computer are connected to the same network.
- You can try to send the print task again after attempting restarting the printer or computer.

Appendix

Product specifications

Taking M1820W as an example, the product specifications may vary depending on the model.

Connection mode	USB	Hi-speed USB2.0
	Ethernet	Not supported
	Wireless LAN	802.11 b/g/n 2.4GHz wireless LAN
	Bluetooth	Bluetooth 4.2
Operation system	Windows	The recommended operating system for users is as follows: Windows7 (32-bit/64-bit), Windows8.1 (32-bit/64-bit), Windows10 (32-bit/64-bit), Windows11 (64-bit)
Paper type		Plain paper, thick paper, thin paper, envelope
Paper tray capacity	Paper feeding capacity	150 pages
	Paper outputting capacity	100 pages
Paper size	Paper feed tray	A4, A5, A5_ Horizontal, A6, B5 (JIS), B6 (JIS), B5 (ISO), B6 (ISO), 16K (184x260mm), 16K (195x270mm), Executive, Envelope #10, Envelope C5, Envelope Monarch, Envelope DL
	Custom	Width: 76-210mm; Length: 116-297mm
Paper thickness	Plain paper	70-89 g/m ²
	Thick paper	90-163 g/m ²
	Thin paper	60-69 g/m ²
Print	Printing resolution	600x600dpi, up to 1200x600dpi
	Printing language	GDI
Copy	Printing resolution	Up to 1,200x600dpi
	Number of copies	1-99 pages
	ID card copying	Support
Scan	Scanning resolution	Up to 1200x1200 dpi
Environment	Operating temperature	5-35 °C (recommended 10~32°C)
	Working humidity	20%-80% RH (recommended 30%-70% RH without condensation)
	Rated voltage/current	220V-240V 4.3A 50Hz